



## AC INDUCTION MOTOR DATA SHEET

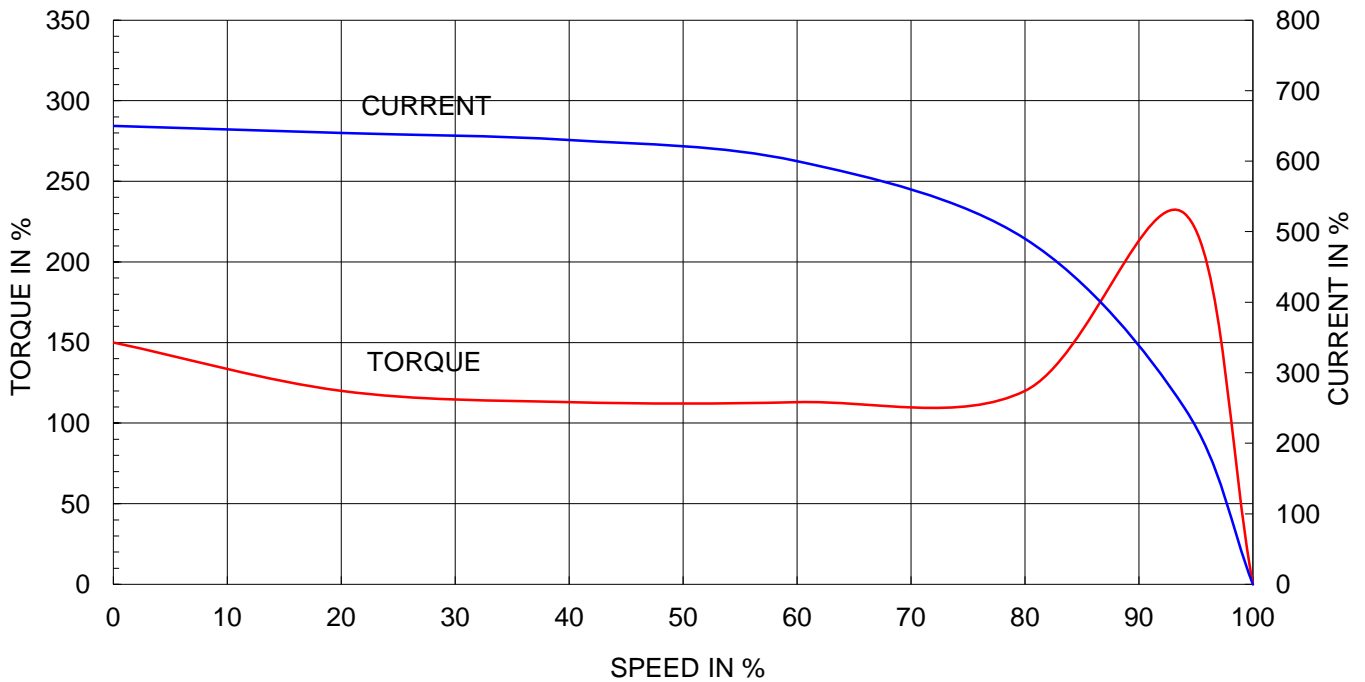
Model No.or RFQ No.		Item No.		Rev. No. [ 0 ]		
Project Name		Project No.		Quantity sets		
GENERAL SPECIFICATION			PERFORMANCE DATA			
Frame Size	250M		Rated Output	75 kW 100 HP		
Type	HS-75/6		Number of Poles	6		
Enclosure(Protection)	Totally Enclosed ( IP55 )		Rotor Type	Squirrel Cage		
Method of Cooling	IC411(FC)		Starting Method*	<input checked="" type="checkbox"/> D.O.L <input type="checkbox"/> Y- Δ		
Rated Frequency	60 Hz		Rated Voltage	440 V	380 V 220 V	
Number of Phases	3		Current	Full Load	123.0 A 142.5 A 246.1 A	
Insulation Class	<input checked="" type="checkbox"/> F <input type="checkbox"/> B <input type="checkbox"/> H			Locked-rotor**	650 %    650 %    650 %	
Temp. Rise at full load (by resistance method)	at 1.0 S.F    80 deg. C		Efficiency	50% Load	93.9 %	
Motor Location	<input checked="" type="checkbox"/> Indoor <input type="checkbox"/> Outdoor			75% Load	94.2 %	
Altitude	Less than 1000 meter			100% Load	94.1 %	
Relative Humidity	Less than 80 %		Power Factor(p.u)	50% Load	0.768	
Ambient Temp.	40 deg. C (Max.)			75% Load	0.831	
Duty Type	Continuous ( S1 )			100% Load	0.850	
Service Factor	1.15		Speed at Full Load	1185 r.p.m		
Mounting	<input checked="" type="checkbox"/> B3 <input type="checkbox"/> B5 <input type="checkbox"/> V1 <input type="checkbox"/> B3/B5		Torque	Full Load	61.6 kg·m	
Bearing	Type	Anti-Friction		Locked-rotor**	150 %	
	DE/N-DE	6316C3 / 6313C3		Breakdown**	230 %	
	Lubricant	Grease(Gadus S2 V 100 2)		Moment of Inertia (J)		
External Thrust	Not applicable		Load(Max.)	126.775 kg·m <sup>2</sup>		
Coupling Method	<input checked="" type="checkbox"/> Direct <input type="checkbox"/> V-Belt		Motor	2.758 kg·m <sup>2</sup>		
Shaft Extension	<input checked="" type="checkbox"/> Single <input type="checkbox"/> Double		Sound Pressure Level (No-load & mean value at 1m from motor)			
Terminal Box	Main	<input type="checkbox"/> Steel <input checked="" type="checkbox"/> Cast Iron		75 dB(A)		
	Aux.	<input type="checkbox"/> Yes <input checked="" type="checkbox"/> No		Vibration		
	Location	Refer to Outline Drawing		2.2 mm/sec (r.m.s)		
Application			Permissible number of consecutive starts	Cold	3 times	
Area classification	Non-Hazardous			Hot	2 times	
Type of Ex-Protection	Not applicable		Paint	Munsell No.	4.0PB5.4/5.5(VL-451)	
Applicable Standard	KS,IEC,NEMA MG1 Part30(Vpeak)		SUBMITTAL DRAWING			
ACCESSORIES			Outline Dimension Drawing \ Motor Weight(Approx.)			
			B3	TJ5MAP51	550 kg	
			B5	TJ50BP51	590 kg	
			V1	TJ50PP51	590 kg	
			B3/B5	TJ5MCP51	570 kg	
			Main T-Box Ass'y	3M-016882		
SPARE PARTS			REMARK			
			<b>High Efficiency</b>			
			*. For use on PWM VFD 10:1VT, 3:1CT@1.0S.F&F Temp. rise			
			Date	DSND	CHKD	CHKD
2010-05-28	R.G. KIM	O.J. KIM	J.H. KIM	K.J. KANG		

Note: Others not mentioned in this data sheet shall be in accordance with maker standard.  
 Above technical data are only design values and shall be guaranteed with tolerance of applicable standard.  
 Inspection and performance test shall be maker standard, if not mentioned.  
 \* In case of Inverter-Fed Motor, performance data is based on sine wave tests.  
 \*\* Data is based on when the motor is supplied at rated voltage & frequency, and the data is expressed as a percentage of full-load value.

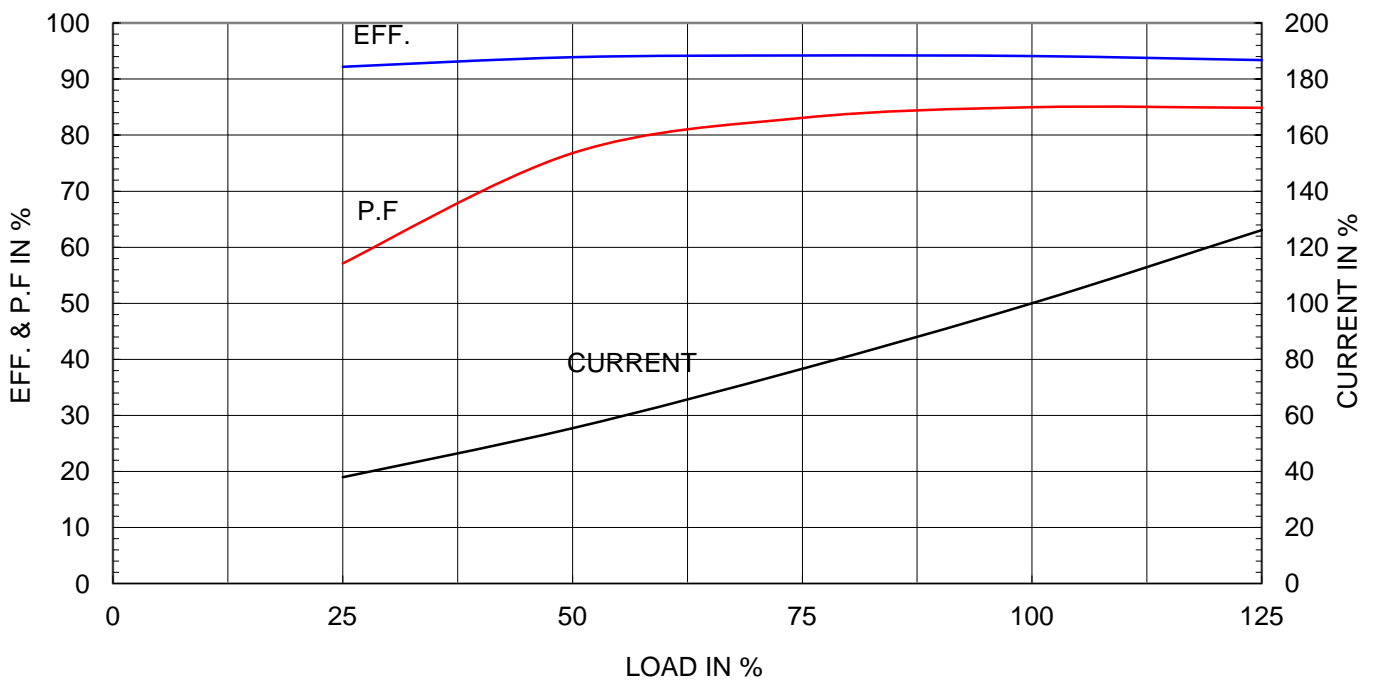
Type	: HS
Full Load Torque	: 61.6 Kg.m
Motor moment of Inertia (J)	: 2.758 Kg.m <sup>2</sup>
Load moment of Inertia (J)	: 126.775 Kg.m <sup>2</sup>

75 kW	6 P	60 Hz	
Speed at Full Load : 1185 RPM			
Rated Voltage	440V	380V	220V
Full Load Current	123.0A	142.5A	246.1A

SPEED VS TORQUE & CURRENT CURVE



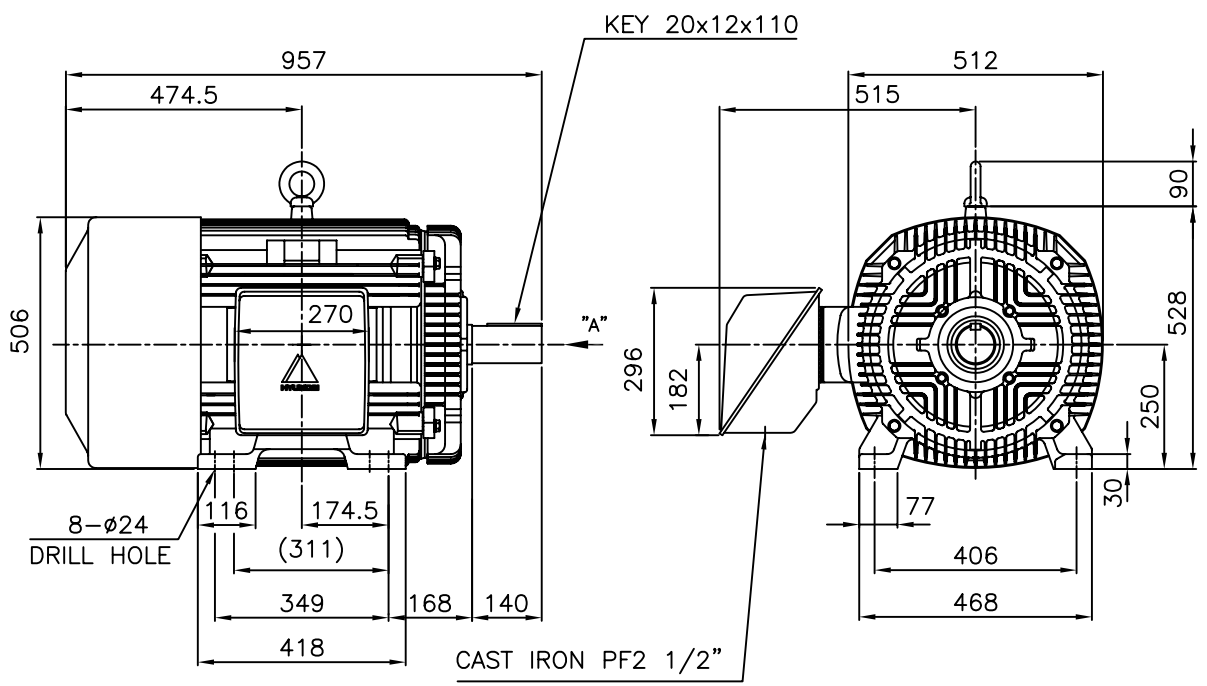
OUTPUT VS EFF., P.F & CURRENT CURVE



본 도면은 현대중공업(주) 재산이므로  
허가없이 복사할 수 없습니다 (취급유의)

THIS DRAWING IS PROPRIETARY TO HHI. NO PART OF THIS DRAWING  
MAYBE REPRODUCED WITHOUT THE PERMISSION OF HHI.

		<h1>TEFC</h1>		<b>TYPE</b> (1) TNB , TDB CAST IRON FRAME
		<b>THREE PHASE INDUCTION MOTOR</b>		

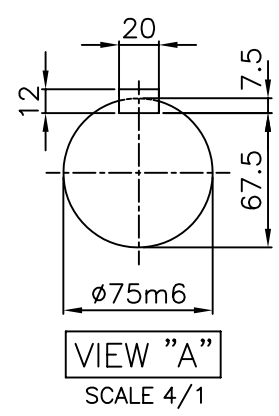


**NOTE**

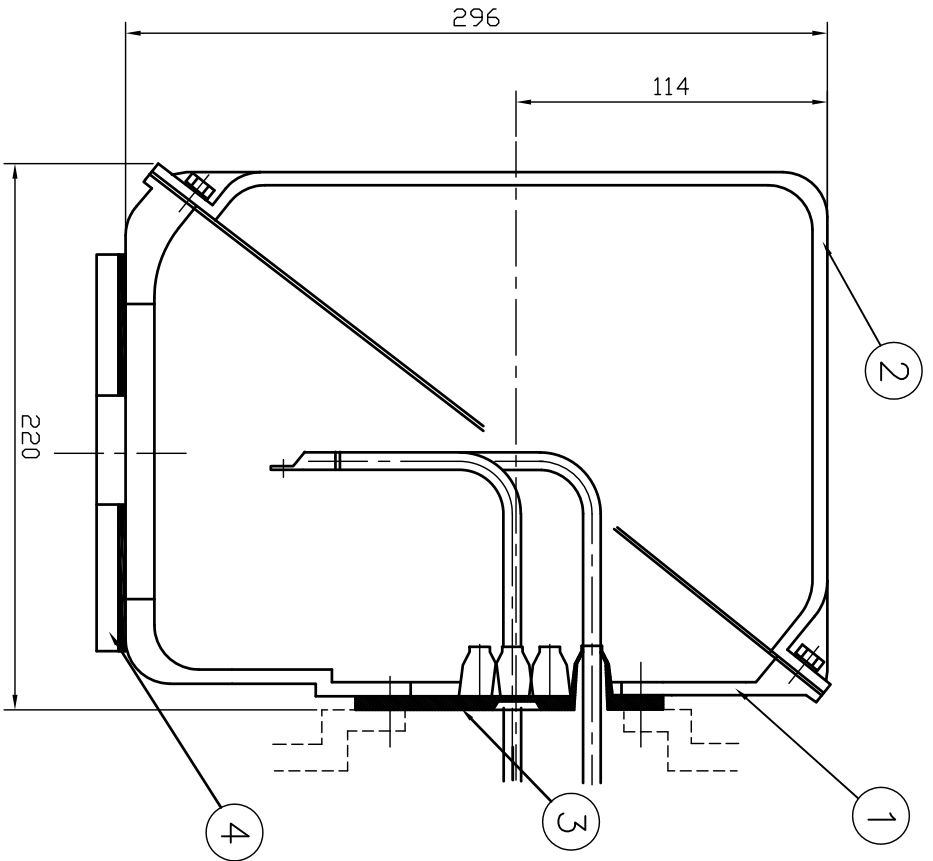
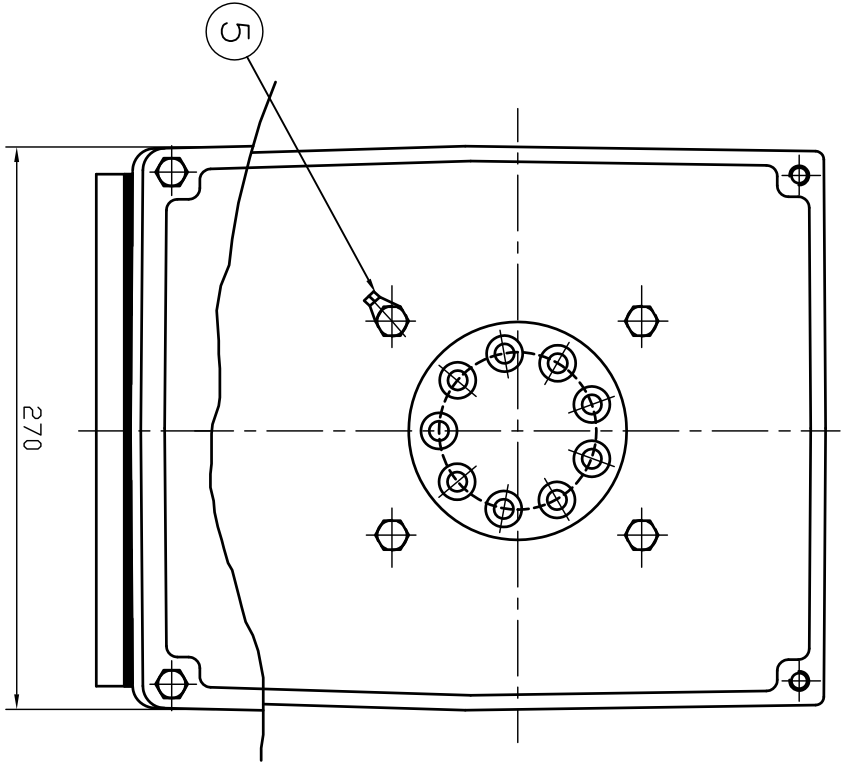
1.TOLERANCE :

CENTER HEIGHT	250	$\begin{matrix} 0 \\ -0.5 \end{matrix}$
BASE HILE	$\phi 24$	$\begin{matrix} +0.43 \\ 0 \end{matrix}$
SHAFT DIAMETER	$\phi 75$	$\begin{matrix} +0.030 \\ +0.011 \end{matrix}$
KEYWAY WIDTH	20	$\begin{matrix} -0.022 \\ -0.074 \end{matrix}$
KEYWAY DEPTH	7.5	$\begin{matrix} +0.2 \\ 0 \end{matrix}$
KEY WIDTH	20	$\begin{matrix} 0 \\ -0.052 \end{matrix}$
KEY HEIGHT	12	$\begin{matrix} 0 \\ -0.110 \end{matrix}$

2.The type (1)-"TNB , TDB" is for HHI's standard products and it can be changed for customer's requirements or detail designing.



				TEFC STANDARD		
APPD BY	KANG K.J.	UNIT	MM	SUBJECT	KS Fr.250M TEFC	
CHKD BY	KIM O.J.	SCALE	1/15			CAD PROJ \ FILE
CHKD BY	LEE N.D.	PROJEC'N	3rd Angle	TITLE OUTLINE THREE-PHASE INDUCTION MOTOR		
DSND BY	KIM RYANG GYU	DATE	2007.03.23			
				REF. NO	L2-Series	Sheet No. of
				DWG NO	TJ5MAP51	Revision No. 0



REV	DATE	CONTENTS	REV'D BY	CHKD BY	Q.P CHK	APPD BY
1						
2						
3						
4						

QTY	DESCRIPTION	MATERIAL	DIMENSION	WEIGHT	PART NO.	REMARK	NO.
1	EARTH TERMINAL LUG						5
1	CABLE ENTRY PLATE						4
1	GASKET	NBR					3
1	TERMINAL BOX COVER	CAST IRON					2
1	TERMINAL BOX BODY	CAST IRON					1

APPD BY	권진오	UNIT	MM
Q.P CHK	주영철	SCALE	NONE
CHKD BY	권오철	PROJEC'N	3 레벨(3rd Angle)
DSND BY	김헌태	DATE	92.06.05

REF. NO	DWG NO	Sheet No. of
	3M-016882	
		Revision No.

TITLE	SUBJECT	FILE
TERMINAL BOX ASS'Y	HLA6 - 250,280Fr.	T-BOX-M \ 38016882

