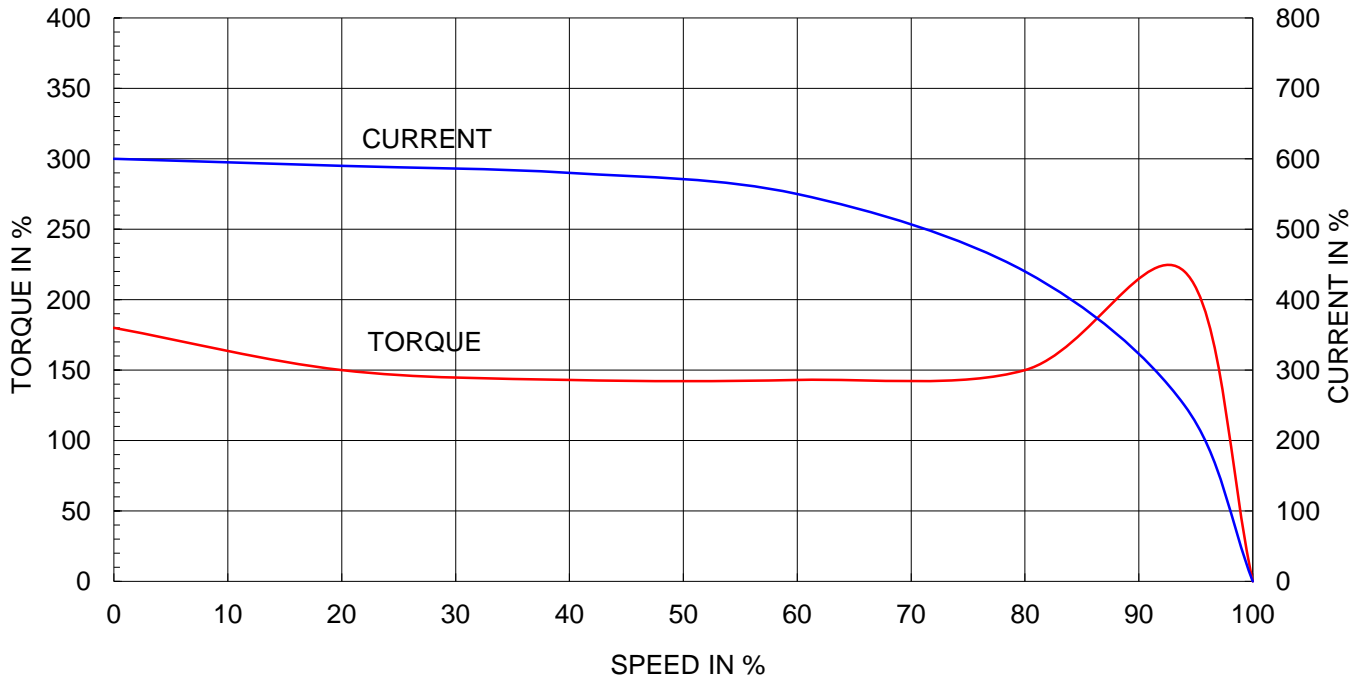




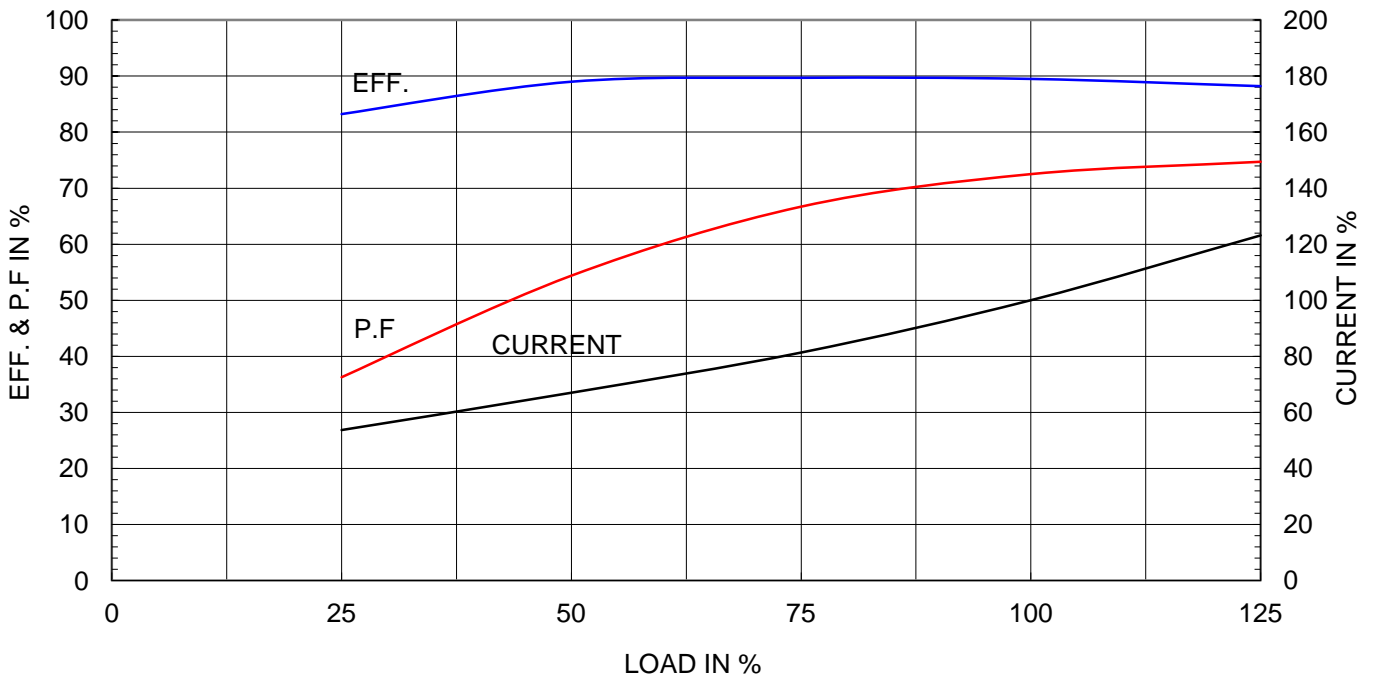
Type	:	HS
Full Load Torque	:	4.6 Kg.m
Motor moment of Inertia (J)	:	0.052 Kg.m <sup>2</sup>
Load moment of Inertia (J)	:	13.000 Kg.m <sup>2</sup>

5.5 kW	6 P	60 Hz	
Speed at Full Load :		1165 RPM	
Rated Voltage	440V	380V	220V
Full Load Current	11.1A	12.9A	22.2A

SPEED VS TORQUE & CURRENT CURVE



OUTPUT VS EFF., P.F & CURRENT CURVE





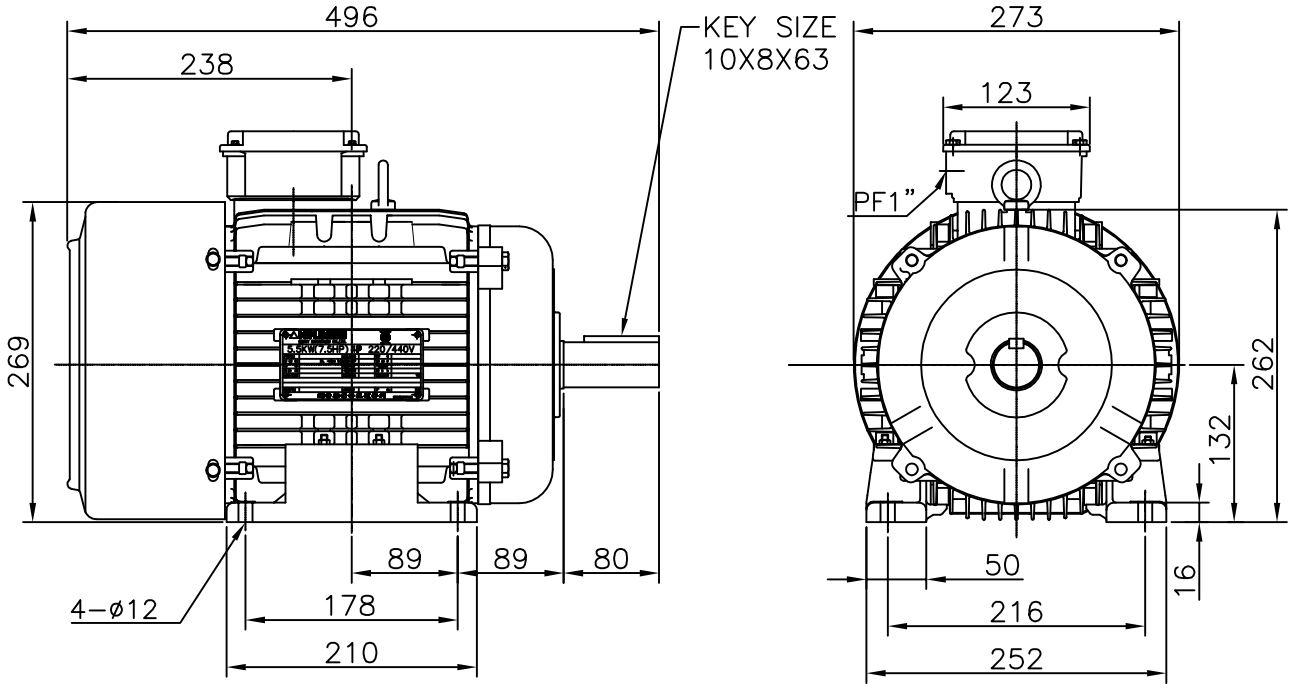
# TEFC

THREE PHASE INDUCTION MOTOR

TYPE

HL, HLS

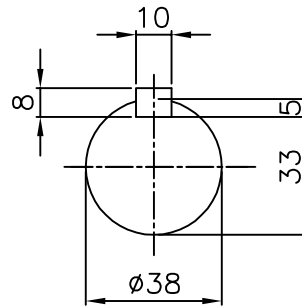
CAST IRON FRAME



NOTE

1.TOLERANCE :

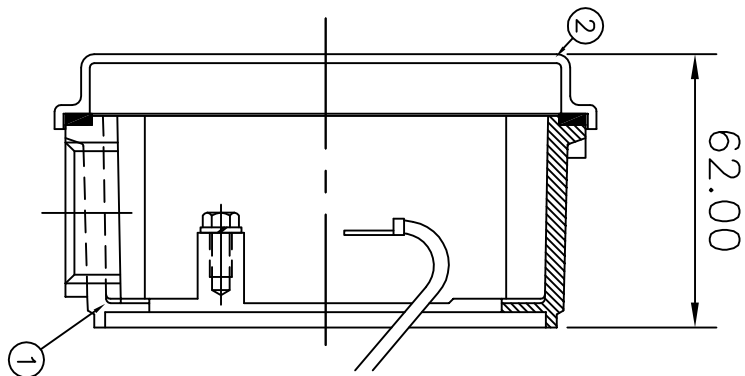
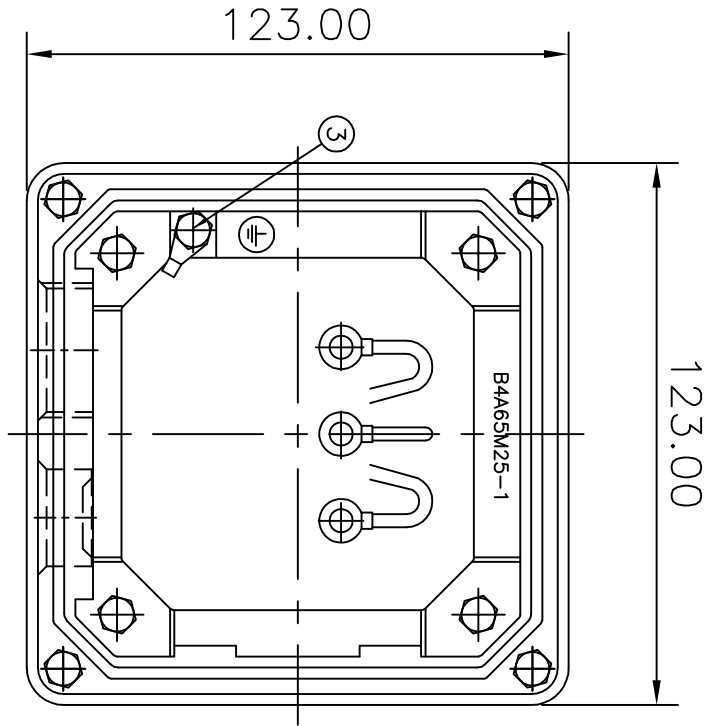
CENTER HEIGHT	132	<sup>+0</sup> <sub>-0.5</sub>
BASE HOLES	ø12	<sup>+0.43</sup> <sub>-0</sub>
SHAFT DIAMETER	ø38	<sup>+0.018</sup> <sub>+0.002</sub>
KEYWAY WIDTH	10	<sup>+0</sup> <sub>-0.036</sub>
KEYWAY DEPTH	5	<sup>+0</sup> <sub>-0.2</sub>



CAST IRON CONDUIT BOX

APPD BY	J. H. KIM	UNIT	mm	SUBJECT	KS 132M	CAD PROJ \ FILE
CHKD BY	Y. S. KIM	SCALE	1/6.5			XSDNKS\B2000AB04
CHKD BY	S. H. KO	PROJEC'N	3rd Angle	TITLE OUTLINE		
DSND BY	S. W. SEO	DATE	2008.06.12			
				REF. NO	B2003AB04	Sheet No. of
				DWG NO	227B2003AB04	Revision No. 0

PT	DESCRIPTION	MATERIAL	Q'TY
1	CONDUIT BOX	ALDCS8	1
2	CONDUIT BOX COVER	ALDCS8	1
3	GROUND TERMINAL BOLT & LUG	CU	1



REV	DATE	CONTENTS	REV'D BY	CHK'D BY	BY	APP'D BY
1						
2						
3						
4						

Q'TY	DESCRIPTION	MATERIAL	DIMENSION	WEIGHT	PART NO.	REMARK	NO.
APP'D BY	UNIT	MM	SUBJECT	IEC 132FR			
CHK'D BY	SCALE	N/S	TITLE				
DSND BY	PROJEC'N	3 [Z]r[lg]rL(3rd Angle)					
JEONG JIN SEON	DATE	2006.02.16.					
REF. NO.	227B9003GB2						
DWG NO.	227B9003GB2						
SHEET NO.	0						



CONDUIT BOX ASS'Y