



PERFORMANCE CURVE

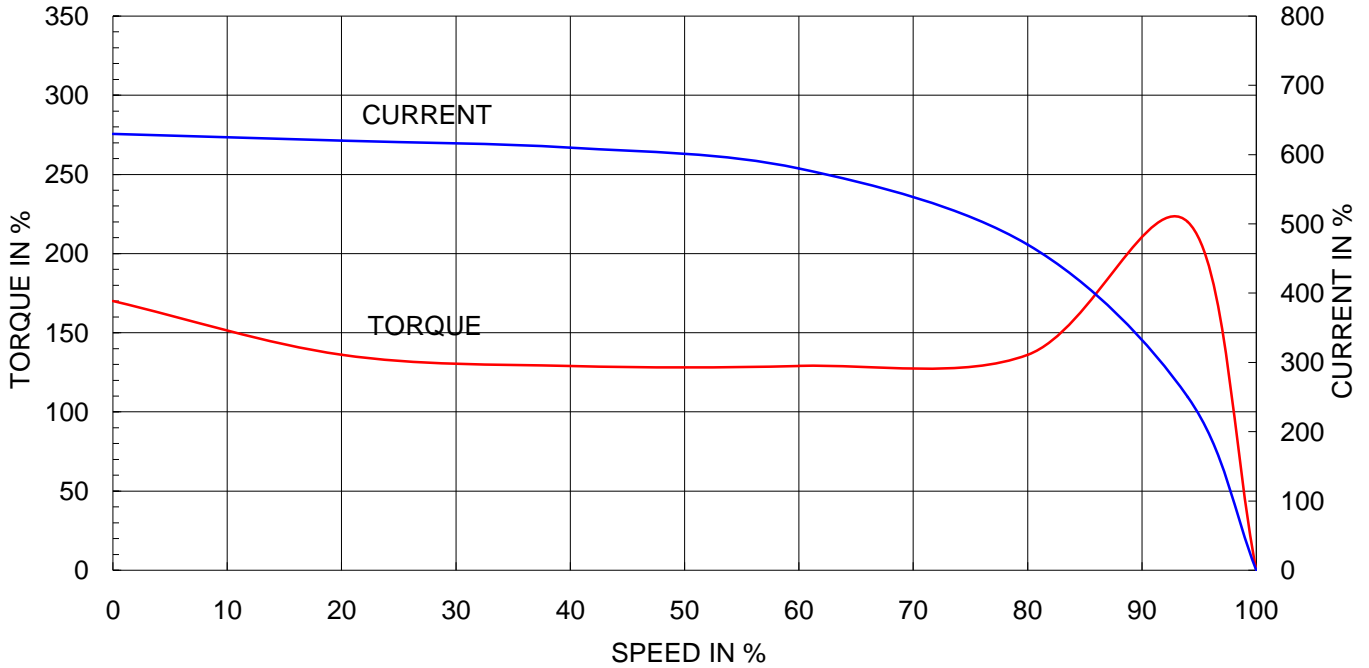
CURVE NO.

P-HS-200/4

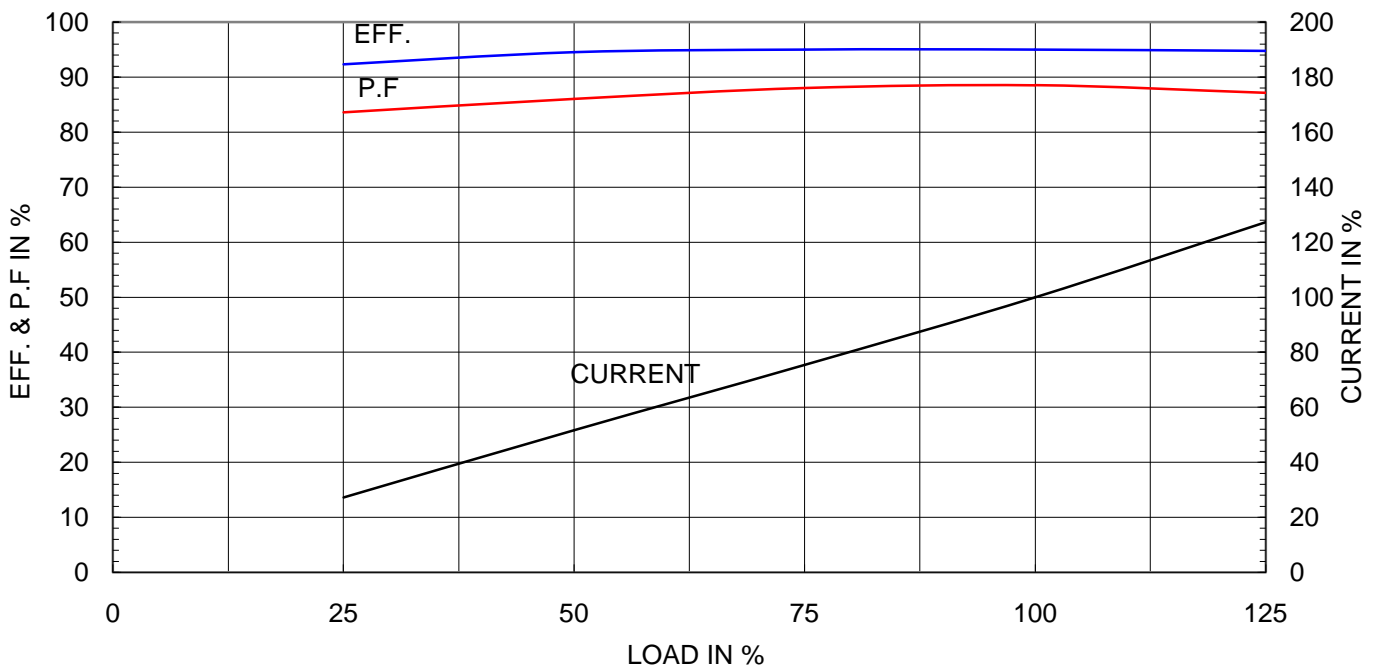
Type	:	HS
Full Load Torque	:	109.1 Kg.m
Motor moment of Inertia (J)	:	5.488 Kg.m ²
Load moment of Inertia (J)	:	139.850 Kg.m ²


200 kW	4 P	60 Hz	
Speed at Full Load :		1785 RPM	
Rated Voltage	440V	380V	220V
Full Load Current	312.1A	361.4A	624.3A

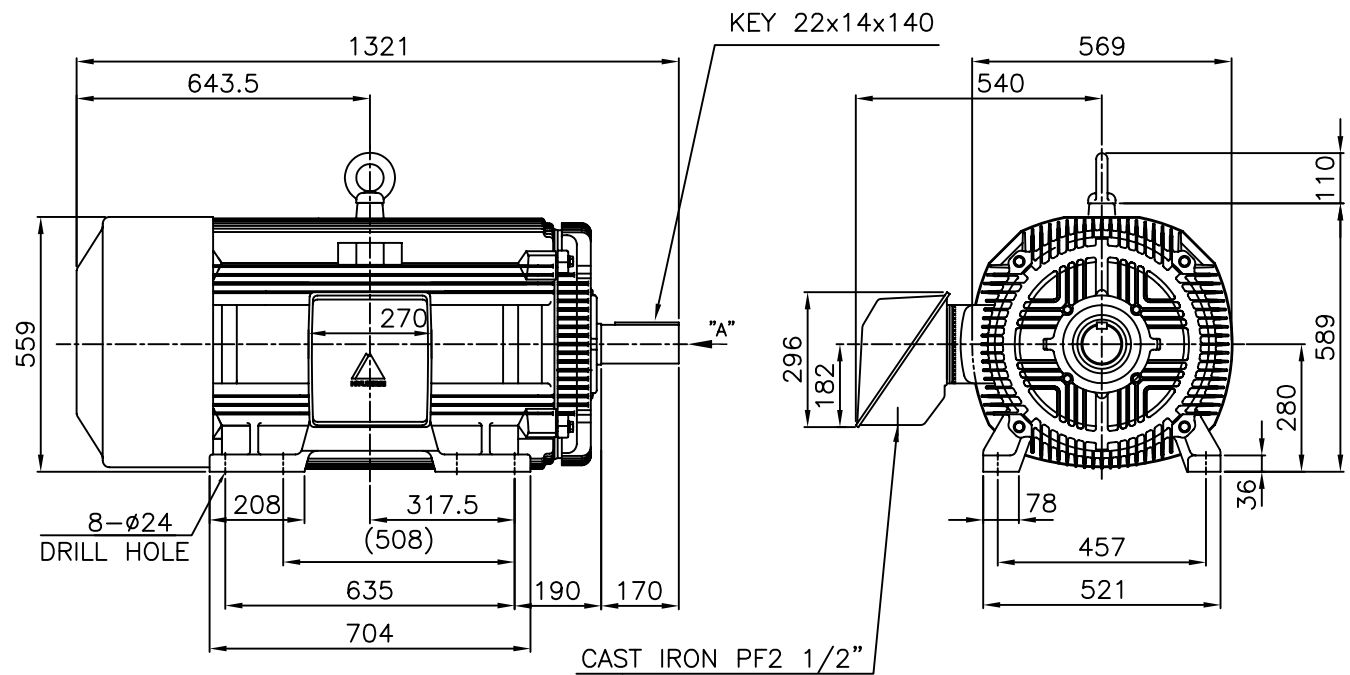
SPEED VS TORQUE & CURRENT CURVE



OUTPUT VS EFF., P.F & CURRENT CURVE



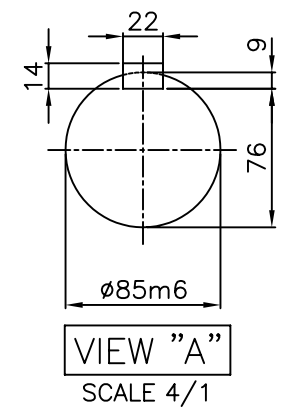
	<h1 style="margin: 0;">TEFC</h1> <h2 style="margin: 0;">THREE PHASE INDUCTION MOTOR</h2>	<h3 style="margin: 0;">TYPE</h3>	(1) TNB , TDB CAST IRON FRAME
---	--	----------------------------------	---




NOTE

1.TOLERANCE :

CENTER HEIGHT	280 $\begin{smallmatrix} 0 \\ -1.0 \end{smallmatrix}$
BASE HOLE	$\phi 24 \begin{smallmatrix} +0.43 \\ 0 \end{smallmatrix}$
SHAFT DIAMETER	$\phi 85 \begin{smallmatrix} +0.035 \\ +0.013 \end{smallmatrix}$
KEYWAY WIDTH	22 $\begin{smallmatrix} -0.022 \\ -0.074 \end{smallmatrix}$
KEYWAY DEPTH	9 $\begin{smallmatrix} +0.2 \\ 0 \end{smallmatrix}$
KEY WIDTH	22 $\begin{smallmatrix} 0 \\ -0.052 \end{smallmatrix}$
KEY HEIGHT	14 $\begin{smallmatrix} 0 \\ -0.110 \end{smallmatrix}$



2.The type (1)-"TNB , TDB" is for HHI's standard products and it can be changed for customer's requirements or detail designing.

				TEFC STANDARD		
APPD BY	KANG K.J.	UNIT	MM	SUBJECT	KS Fr.280LL TEFC	
CHKD BY	KIM O.J.	SCALE	1/17			CAD PROJ \ FILE
CHKD BY	LEE N.D.	PROJEC'N	3rd Angle	TITLE OUTLINE THREE-PHASE INDUCTION MOTOR		
DSND BY	KIM RYANG GYU	DATE	2007.03.23			
				REF. NO	L2-Series	Sheet No. of
				DWG NO	TJ8XAP51	Revision No. 0

