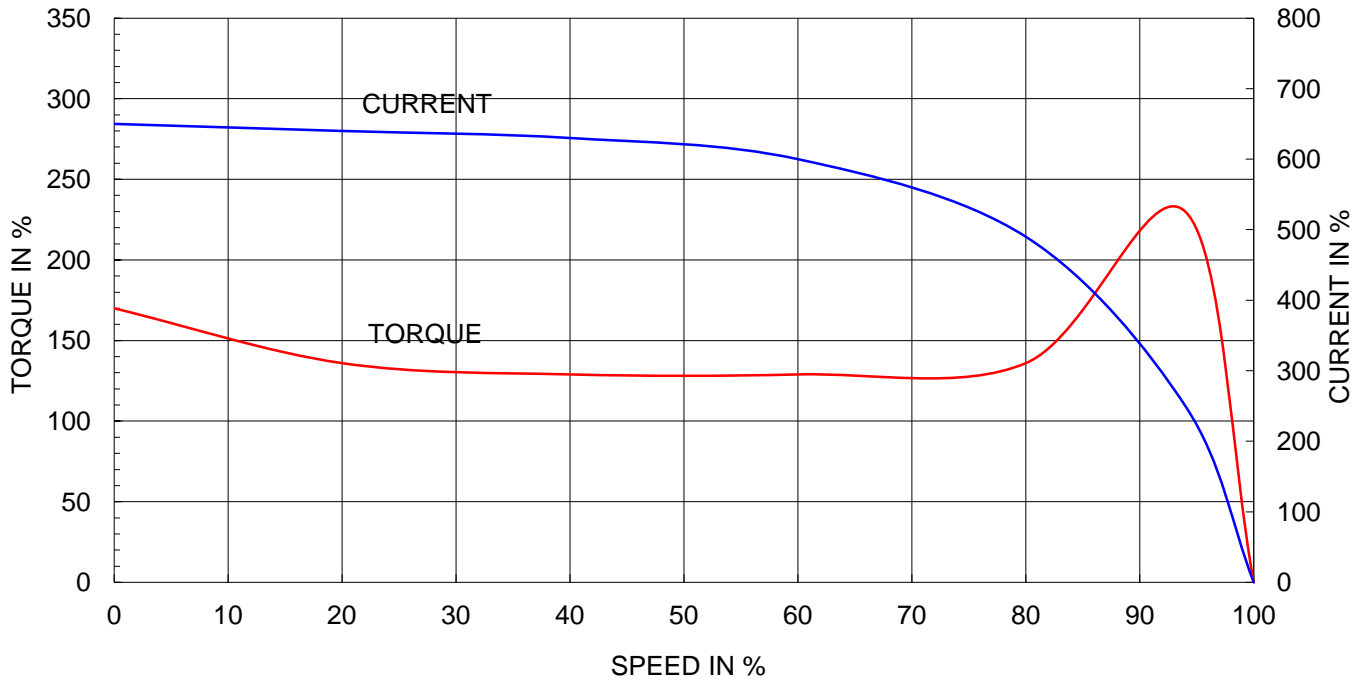


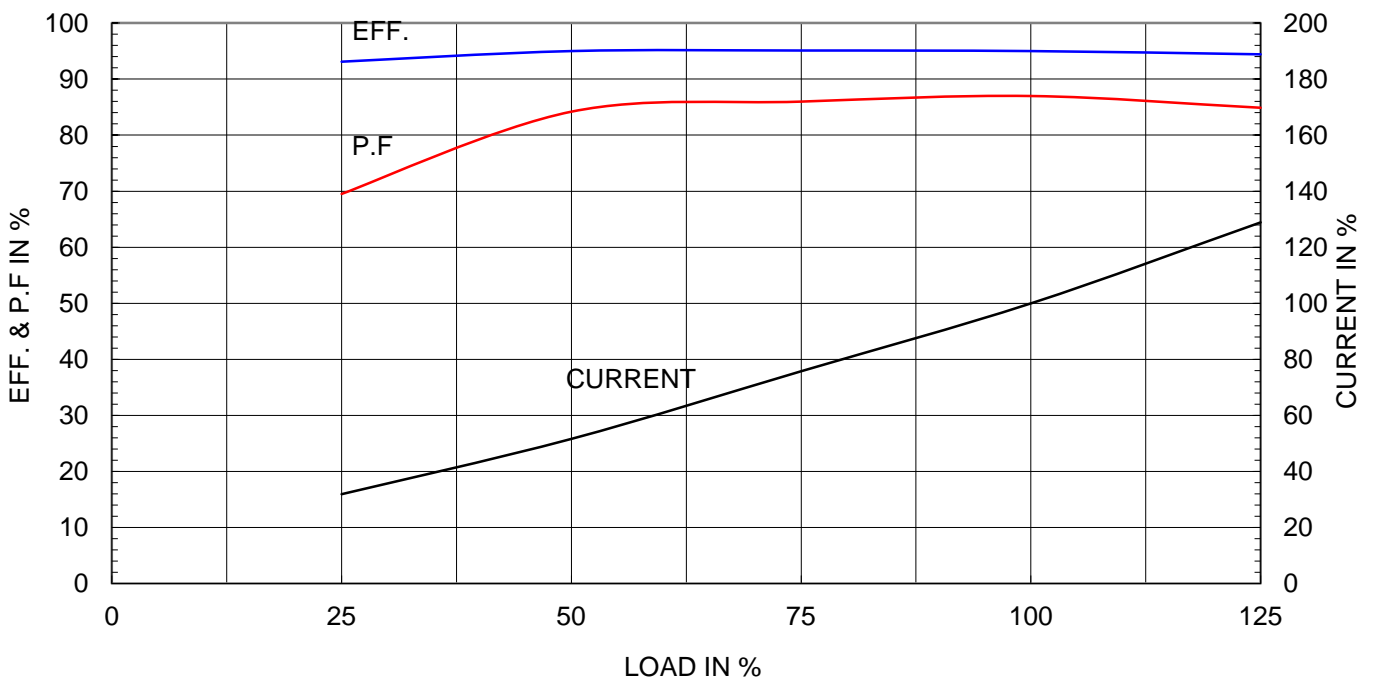
Type	: HS
Full Load Torque	: 131.5 Kg.m
Motor moment of Inertia (J)	: 7.288 Kg.m ²
Load moment of Inertia (J)	: 224.250 Kg.m ²

160 kW	6 P	60 Hz
Speed at Full Load :		1185 RPM
Rated Voltage	440V	380V
Full Load Current	254.0A	294.1A

SPEED VS TORQUE & CURRENT CURVE



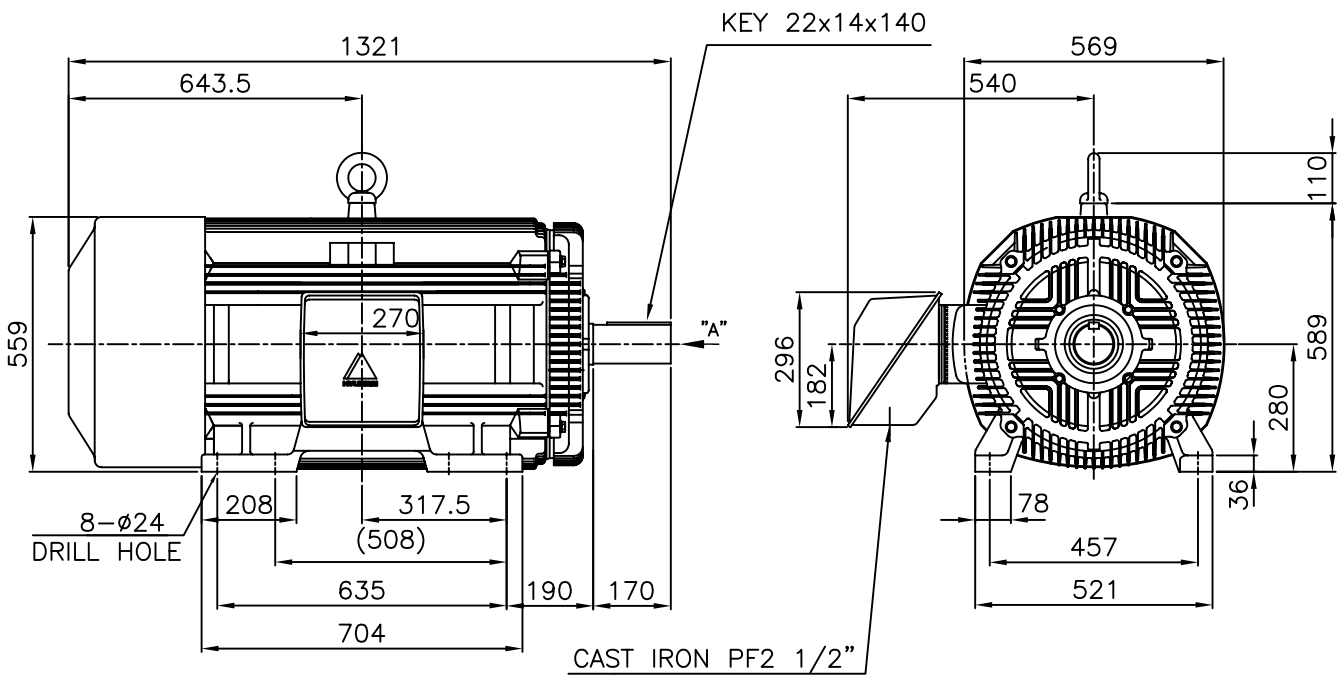
OUTPUT VS EFF., P.F & CURRENT CURVE



본 도면은 현대중공업(주) 재산이므로
허가없이 복사할 수 없음 (취급유의)

THIS DRAWING IS PROPRIETARY TO HHI. NO PART OF THIS DRAWING
MAYBE REPRODUCED WITHOUT THE PERMISSION OF HHI.

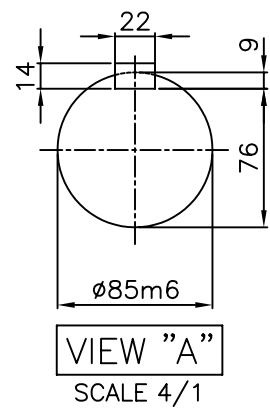
		<h1>TEFC</h1>		TYPE (1) TNB , TDB CAST IRON FRAME
		THREE PHASE INDUCTION MOTOR		



NOTE

1.TOLERANCE :

CENTER HEIGHT	280	0 -1.0
BASE HOLE	$\phi 24$	$+0.43$ 0
SHAFT DIAMETER	$\phi 85$	$+0.035$ $+0.013$
KEYWAY WIDTH	22	-0.022 -0.074
KEYWAY DEPTH	9	$+0.2$ 0
KEY WIDTH	22	0 -0.052
KEY HEIGHT	14	0 -0.110



2.The type (1)-"TNB , TDB" is for HHI's standard products and it can be changed for customer's requirements or detail designing.

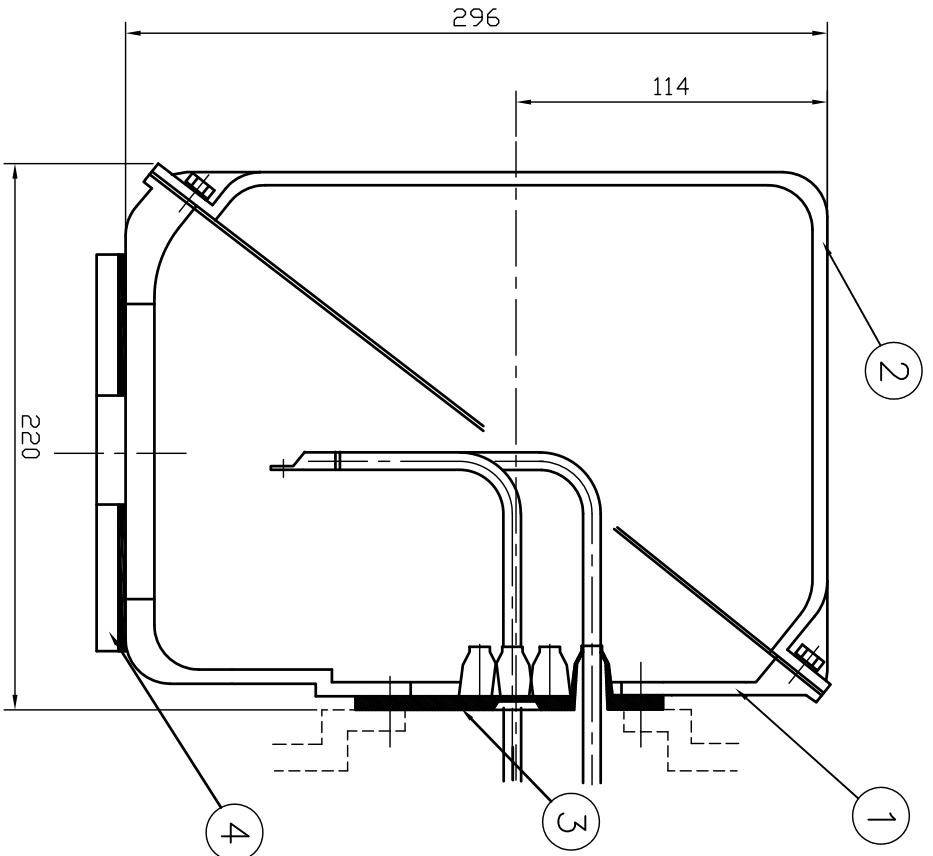
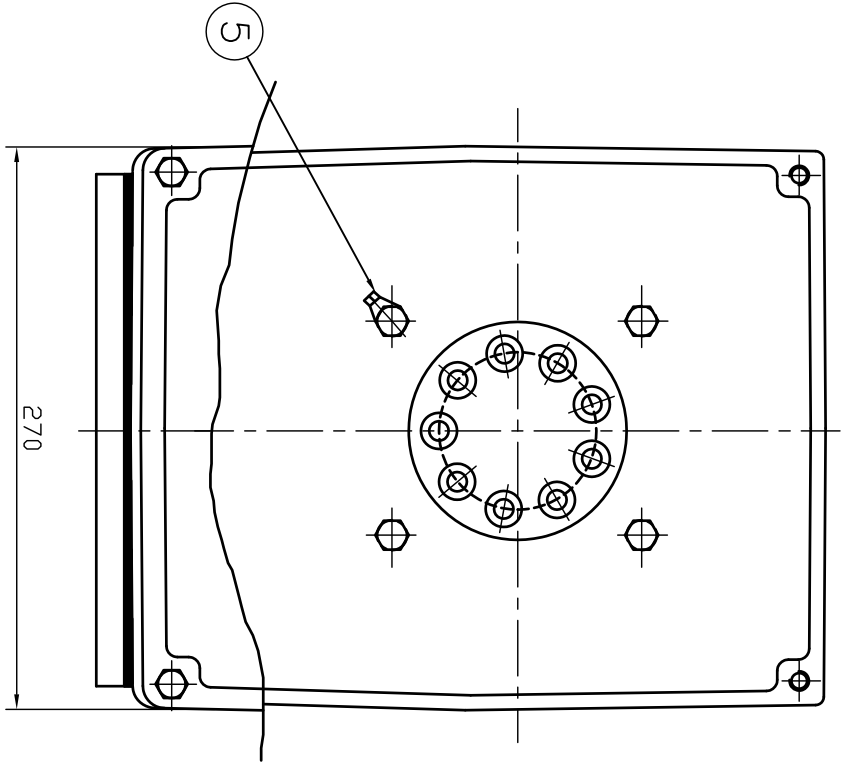
TEFC STANDARD

CAD PROJ \ FILE
MMSTDMTR/TJ8XAP51

APPD BY	KANG K.J.	UNIT	MM
CHKD BY	KIM O.J.	SCALE	1/17
CHKD BY	LEE N.D.	PROJEC'N	3rd Angle
DSND BY	KIM RYANG GYU	DATE	2007.03.23

SUBJECT	KS Fr.280LL TEFC
TITLE	OUTLINE THREE-PHASE INDUCTION MOTOR

REF. NO	L2-Series	Sheet No. of
DWG NO	TJ8XAP51	Revision No. 0



REV	DATE	CONTENTS	REV'D BY	CHK'D BY	Q.P. CHK	APP'D BY
1						

QTY	DESCRIPTION	MATERIAL	DIMENSION	WEIGHT	PART NO.	REMARK	NO.
1	EARTH TERMINAL LUG						5
1	CABLE ENTRY PLATE						4
1	GASKET	NBR					3
1	TERMINAL BOX COVER	CAST IRON					2
1	TERMINAL BOX BODY	CAST IRON					1

APP'D BY	권진오	UNIT	MM
Q.P. CHK	주영철	SCALE	NONE
CHK'D BY	권오철	PROJEC'N	3 권(3rd Angle)
DSND BY	김현태	DATE	92.06.05

REF. NO	DWG NO	REV. NO
	3M-016882	

TITLE	SUBJECT	CAD PROJ	FILE
TERMINAL BOX ASS'Y	HJAG - 250,280Fr.	T-BOX-M	3M016882

Sheet No. of	Revision No.

