

AC INDUCTION MOTOR DATA SHEET

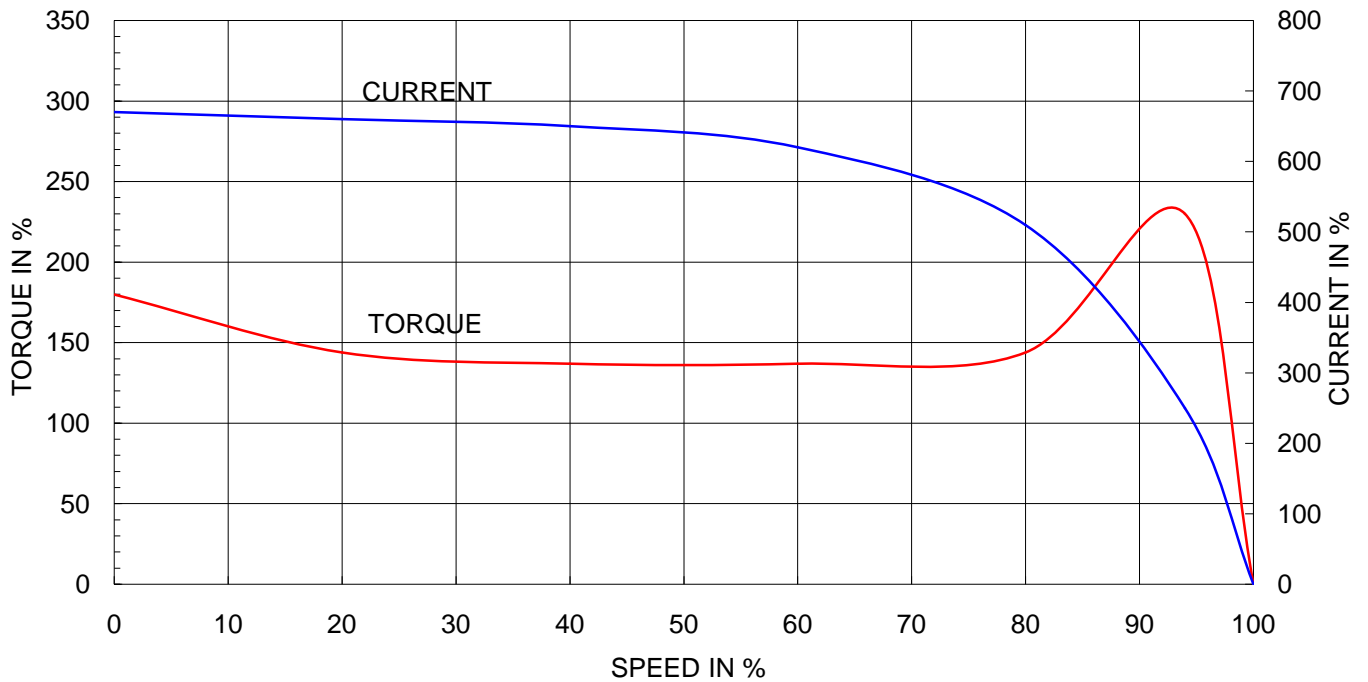
Model No. or RFQ No.		Item No.		Rev. No. [0]			
Project Name		Project No.		Quantity sets			
GENERAL SPECIFICATION			PERFORMANCE DATA				
Frame Size	280M		Rated Output	132 kW 175 HP			
Type	HS-132/4		Number of Poles	4			
Enclosure(Protection)	Totally Enclosed (IP55)		Rotor Type	Squirrel Cage			
Method of Cooling	IC411(FC)		Starting Method*	<input type="checkbox"/> D.O.L <input type="checkbox"/> Y- Δ			
Rated Frequency	60 Hz		Rated Voltage	440 V	380 V 220 V		
Number of Phases	3		Current	Full Load	207.2 A 239.9 A 414.4 A		
Insulation Class	<input checked="" type="checkbox"/> F <input type="checkbox"/> B <input type="checkbox"/> H			Locked-rotor**	670 % 670 % 670 %		
Temp. Rise at full load (by resistance method) at 1.0 S.F			Efficiency				
80 deg. C			50% Load 94.4 %				
Motor Location <input checked="" type="checkbox"/> Indoor <input type="checkbox"/> Outdoor			75% Load 95.0 %				
Altitude Less than 1000 meter			100% Load 95.0 %				
Relative Humidity Less than 80 %			Power Factor(p.u)				
Ambient Temp. 40 deg. C (Max.)			50% Load 0.848				
Duty Type Continuous (S1)			75% Load 0.878				
Service Factor 1.15			100% Load 0.880				
Mounting <input checked="" type="checkbox"/> B3 <input type="checkbox"/> B5 <input type="checkbox"/> V1 <input type="checkbox"/> B3/B5			Speed at Full Load 1785 r.p.m				
Bearing	Type	Anti-Friction		Torque			
	DE/N-DE	6318C3 / 6316C3		Full Load	72.0 kg-m		
	Lubricant	Grease(Gadus S2 V 100 2)		Locked-rotor**	180 %		
External Thrust Not applicable			Breakdown** 230 %				
Coupling Method <input checked="" type="checkbox"/> Direct <input type="checkbox"/> V-Belt			Moment of Inertia (J)				
Shaft Extension <input checked="" type="checkbox"/> Single <input type="checkbox"/> Double			Load(Max.) 111.825 kg-m ²				
Terminal Box	Main	<input type="checkbox"/> Steel <input checked="" type="checkbox"/> Cast Iron		Motor 3.415 kg-m ²			
	Aux.	<input type="checkbox"/> Yes <input checked="" type="checkbox"/> No		Sound Pressure Level (No-load & mean value at 1m from motor)			
	Location	Refer to Outline Drawing		85 dB(A)			
Application			Vibration 2.2 mm/sec (r.m.s)				
Area classification Non-Hazardous			Permissible number of consecutive starts				
Type of Ex-Protection Not applicable			Cold 3 times				
Applicable Standard KS,IEC,NEMA MG1 Part30(Vpeak)			Hot 2 times				
			Paint	Munsell No.	4.0PB5.4/5.5(VL-451)		
ACCESSORIES			SUBMITTAL DRAWING				
			Outline Dimension Drawing \ Motor Weight(Approx.)				
			B3	TJ8MAP51	740 kg		
			B5		kg		
			V1		kg		
			B3/B5		kg		
			Main T-Box Ass'y	3M-016882			
SPARE PARTS			REMARK				
			High Efficiency			* For use on PWM VFD 10:1VT, 3:1CT@1.0S.F&F Temp. rise	
			Date	DSND	CHKD	CHKD	APPD
			2010-05-28	R.G. KIM	O.J. KIM	J.H. KIM	K.J. KANG

Note: Others not mentioned in this data sheet shall be in accordance with maker standard.
 Above technical data are only design values and shall be guaranteed with tolerance of applicable standard.
 Inspection and performance test shall be maker standard, if not mentioned.
 * In case of Inverter-Fed Motor, performance data is based on sine wave tests.
 ** Data is based on when the motor is supplied at rated voltage & frequency, and the data is expressed as a percentage of full-load value.

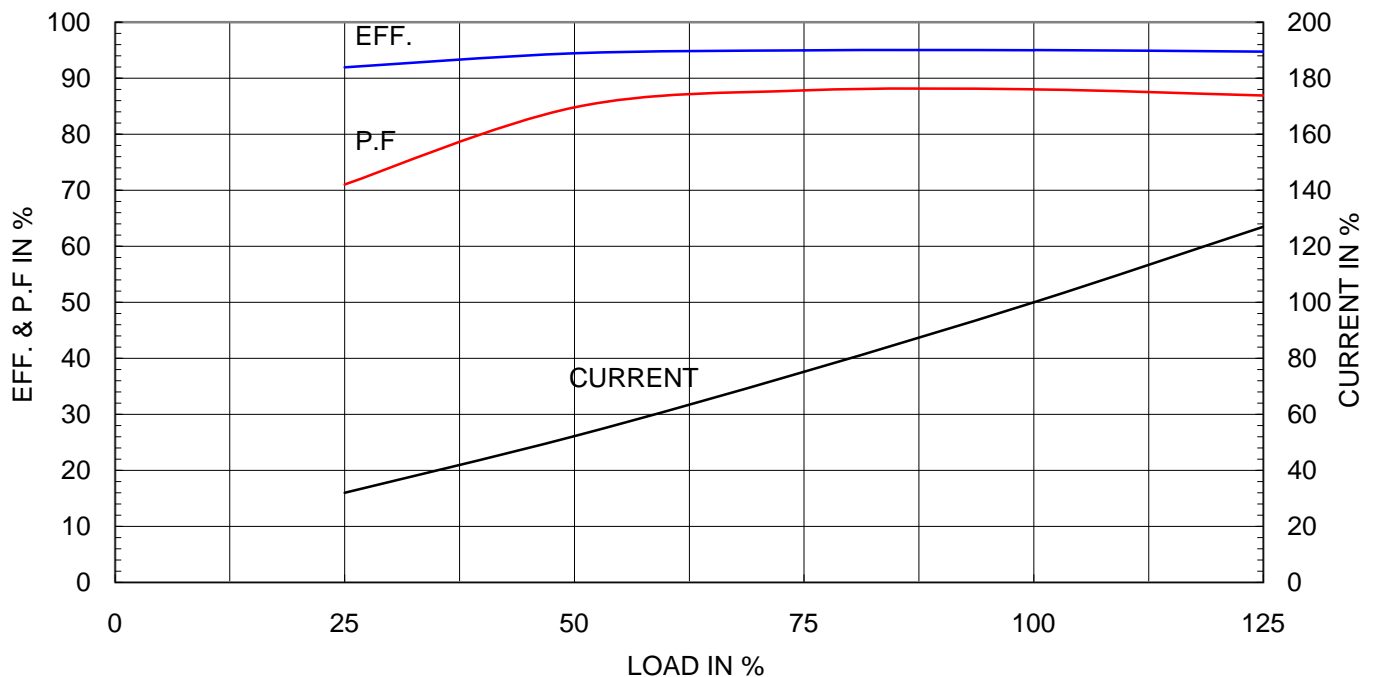
Type	:	HS
Full Load Torque	:	72.0 Kg.m
Motor moment of Inertia (J)	:	3.415 Kg.m ²
Load moment of Inertia (J)	:	111.825 Kg.m ²

132 kW	4 P	60 Hz	
Speed at Full Load : 1785 RPM			
Rated Voltage	440V	380V	220V
Full Load Current	207.2A	239.9A	414.4A

SPEED VS TORQUE & CURRENT CURVE



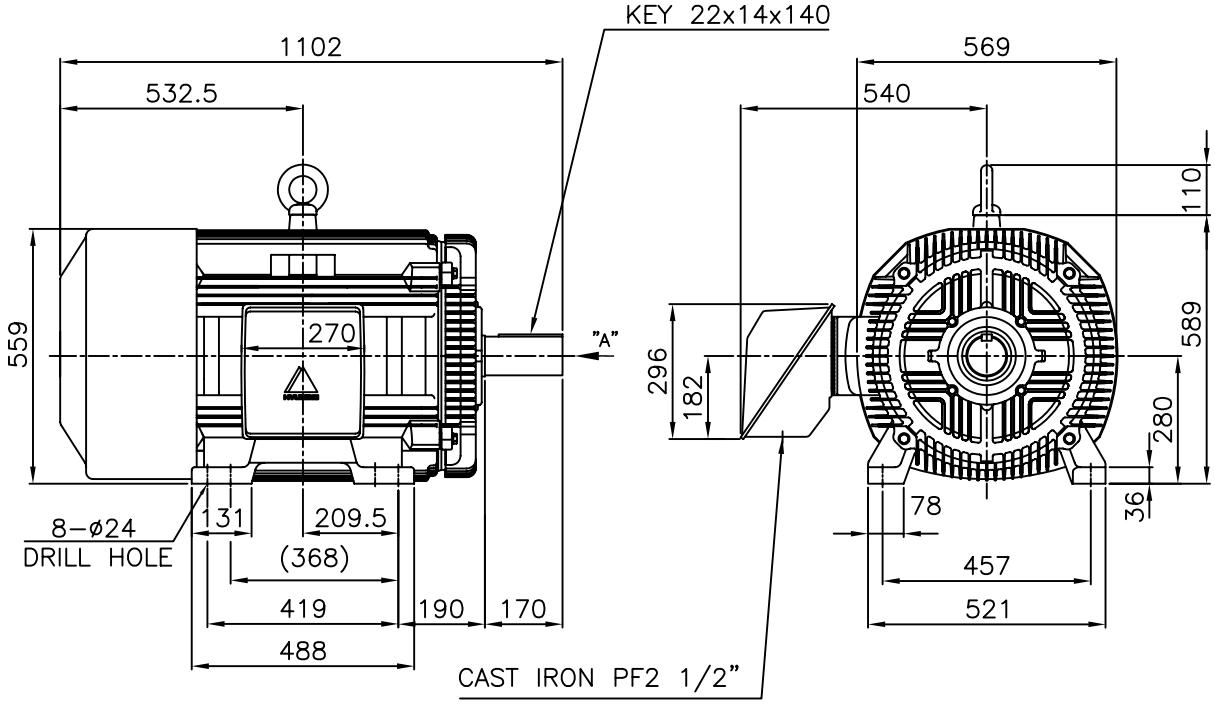
OUTPUT VS EFF., P.F & CURRENT CURVE



본 도면은 현대중공업(주) 재산이므로
허가없이 복사할 수 없음 (취급유의)

THIS DRAWING IS PROPRIETARY TO HHI. NO PART OF THIS DRAWING
MAYBE REPRODUCED WITHOUT THE PERMISSION OF HHI.

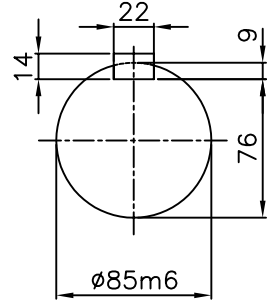
		<h1>TEFC</h1>		TYPE (1) TNB , TDB CAST IRON FRAME
		THREE PHASE INDUCTION MOTOR		



NOTE

1.TOLERANCE :

CENTER HEIGHT	280 $\begin{smallmatrix} 0 \\ -1.0 \end{smallmatrix}$
BASE HOLE	$\phi 24 \begin{smallmatrix} +0.43 \\ 0 \end{smallmatrix}$
SHAFT DIAMETER	$\phi 85 \begin{smallmatrix} +0.035 \\ +0.013 \end{smallmatrix}$
KEYWAY WIDTH	22 $\begin{smallmatrix} -0.022 \\ -0.074 \end{smallmatrix}$
KEYWAY DEPTH	9 $\begin{smallmatrix} +0.2 \\ 0 \end{smallmatrix}$
KEYWAY WIDTH	22 $\begin{smallmatrix} 0 \\ -0.052 \end{smallmatrix}$
KEYWAY DEPTH	14 $\begin{smallmatrix} 0 \\ -0.110 \end{smallmatrix}$



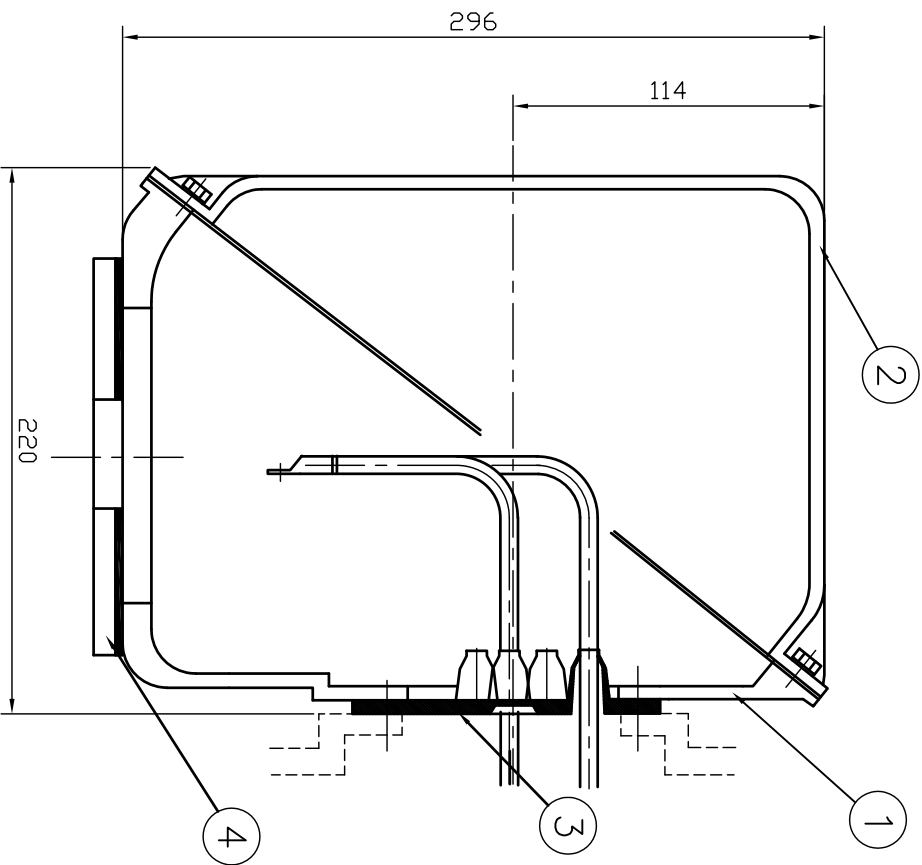
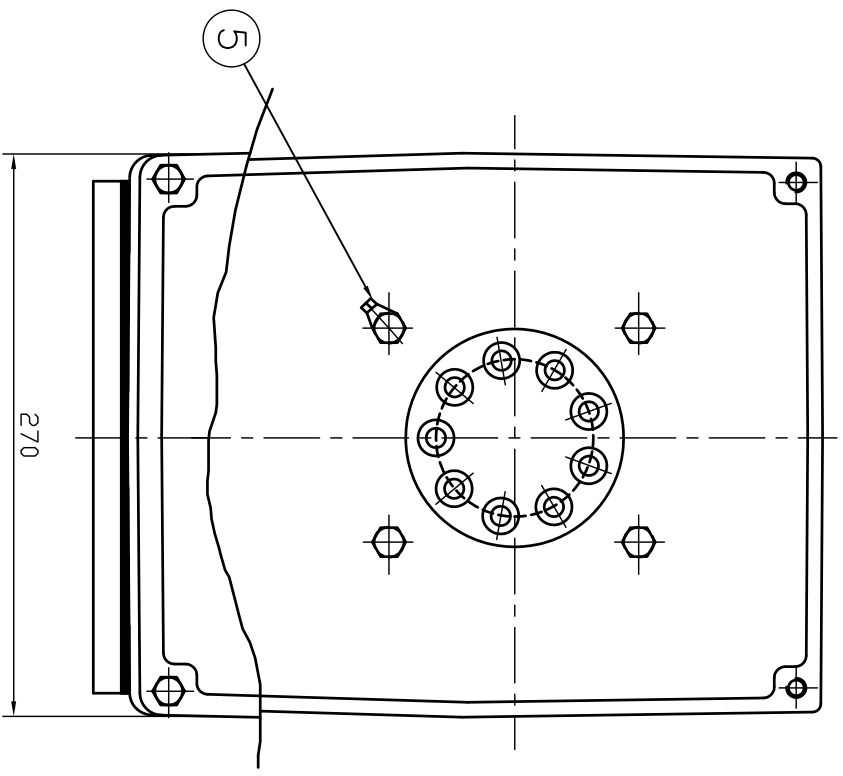
VIEW "A"
SCALE 4/1

2.The type (1)-"TNB , TDB" is for HHI's standard products and it can be changed for customer's requirements or detail designing.

TEFC STANDARD

APPD BY	KANG K.J.	UNIT	MM	SUBJECT	KS Fr.280M TEFC	CAD PROJ \ FILE	MMSTDMTR/TJ8MAP51
CHKD BY	KIM O.J.	SCALE	1/17	TITLE	OUTLINE THREE-PHASE INDUCTION MOTOR	Sheet No. of	
CHKD BY	LEE N.D.	PROJEC'N	3rd Angle	REF. NO		L2-Series	Revision No. 0
DSND BY	KIM RYANG GYU	DATE	2007.03.23	DWG NO	TJ8MAP51		

본 도면은 현대중전기(주) 재산이므로 허가없이 복사할 수 없음 (도면취급 시 유의하시기 바람.)



REV	DATE	CONTENTS	REV'D BY	CHKD BY	Q.P CHK	APPD BY
1						
2						
3						
4						

1	EARTH TERMINAL LUG									
1	CABLE ENTRY PLATE									
1	GASKET	NBR								
1	TERMINAL BOX COVER	CAST IRON								
1	TERMINAL BOX BODY	CAST IRON								
QTY	DESCRIPTION	MATERIAL	DIMENSION	WEIGHT	PART NO.	REMARK	NO.			
APPD BY	권진오	UNIT	MM							
Q.P CHK	주영철	SCALE	NONE							
CHKD BY	권오철	PROJEC'N	3 레벨(3rd Angle)							
DSND BY	김헌태	DATE	92.06.05							
SUBJECT		TITLE								
HLA6 - 250,280Fr.		(CAST IRON)								
		TERMINAL BOX ASS'Y								
REF. NO	DWG NO	3M-016882	Sheet No. of							
			Revision No.							