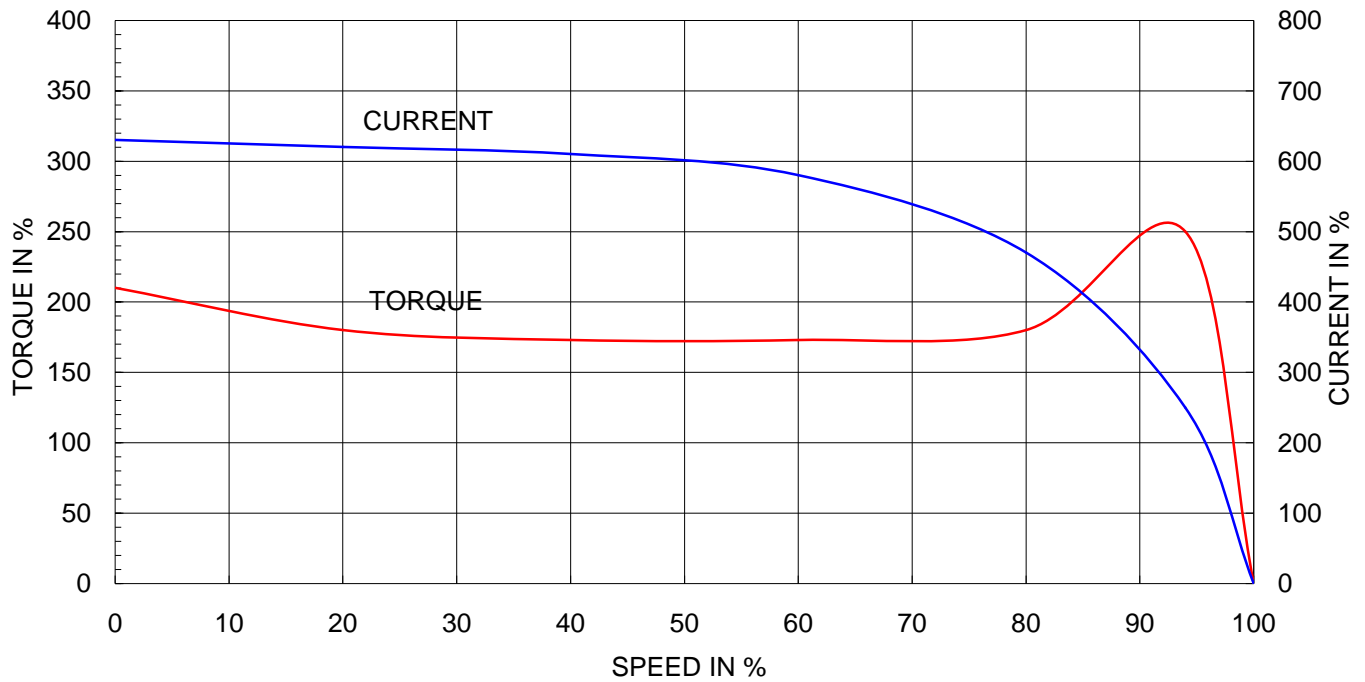




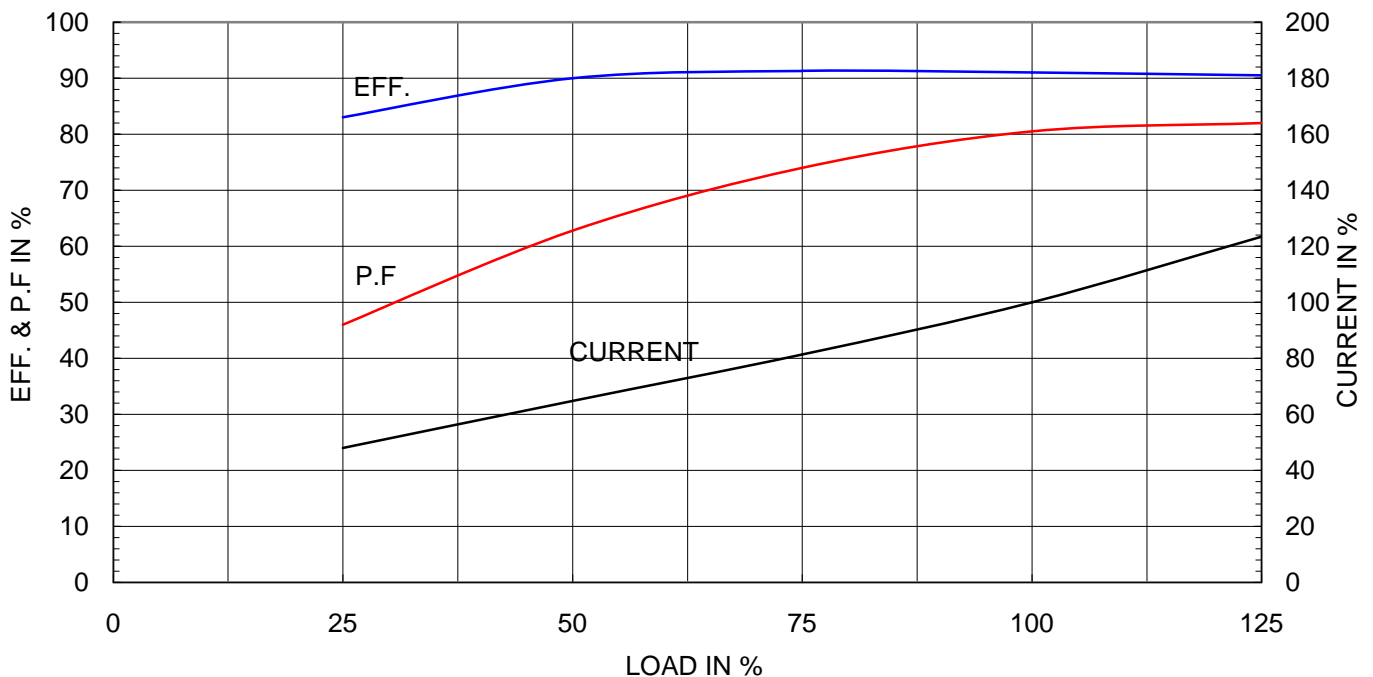
Type	:	HS
Full Load Torque	:	6.1 Kg.m
Motor moment of Inertia (J)	:	0.060 Kg.m <sup>2</sup>
Load moment of Inertia (J)	:	9.000 Kg.m <sup>2</sup>

11 kW	4 P	60 Hz	
Speed at Full Load :		1770 RPM	
Rated Voltage	440V	380V	220V
Full Load Current	19.7A	22.8A	39.4A

SPEED VS TORQUE & CURRENT CURVE



OUTPUT VS EFF., P.F & CURRENT CURVE





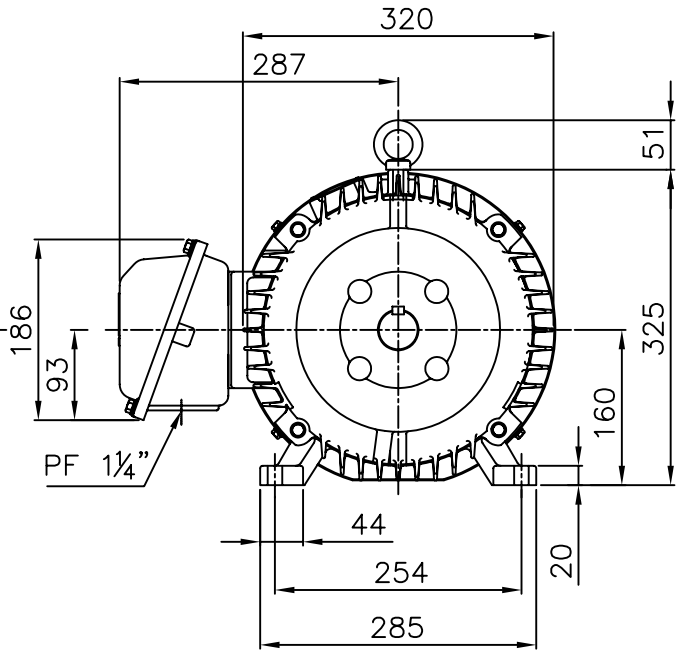
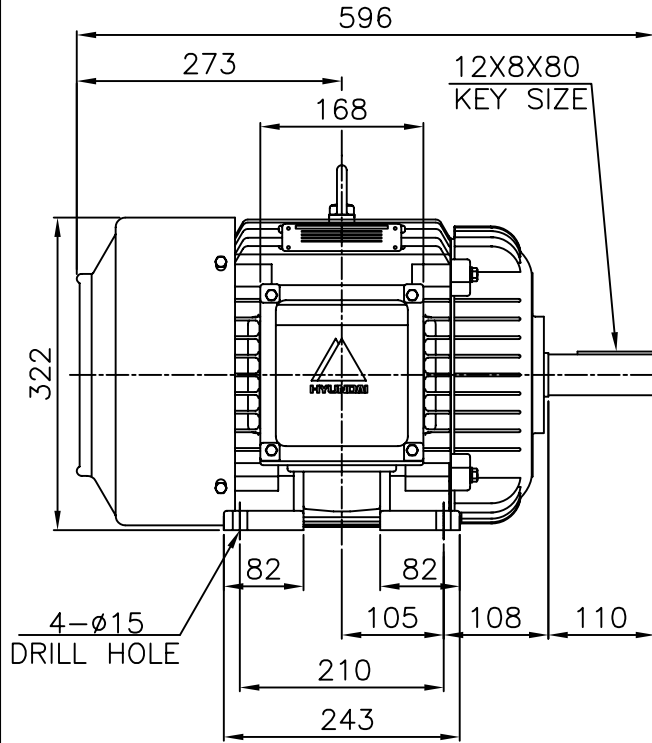
# TEFC

THREE PHASE INDUCTION MOTOR

TYPE

HL, HLS

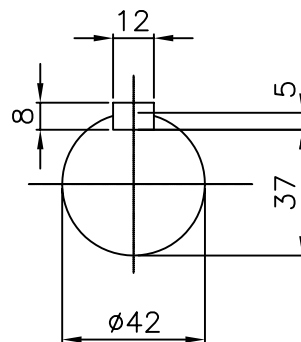
CAST IRON FRAME



NOTE

1.TOLERANCE :

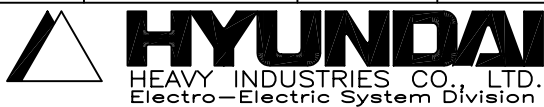
CENTER HEIGHT	160	$\begin{matrix} 0 \\ -0.5 \end{matrix}$
BASE HOLES	$\phi 15$	$\begin{matrix} +0.43 \\ 0 \end{matrix}$
SHAFT DIAMETER	$\phi 42$	$\begin{matrix} +0.018 \\ +0.002 \end{matrix}$
KEYWAY WIDTH	12	$\begin{matrix} 0 \\ -0.043 \end{matrix}$
KEYWAY DEPTH	5	$\begin{matrix} +0.2 \\ 0 \end{matrix}$



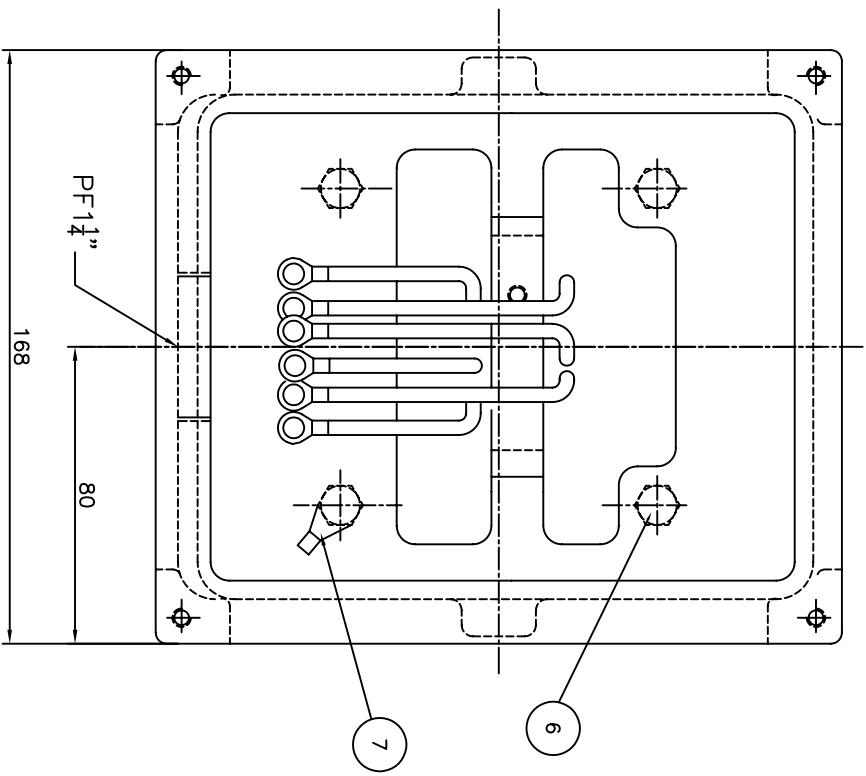
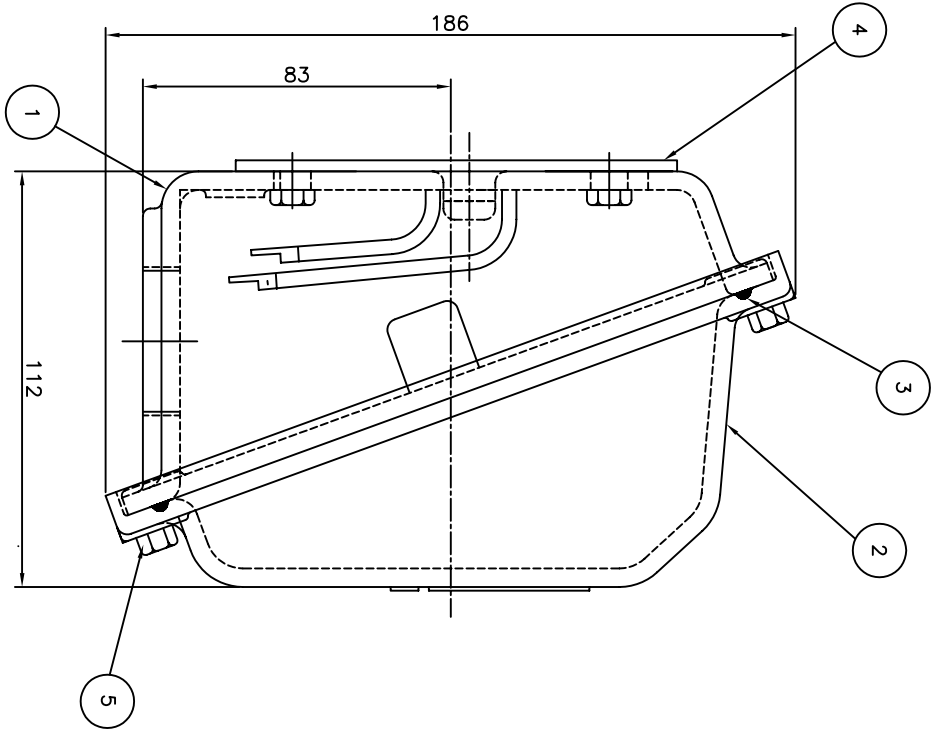
CAST IRON CONDUIT BOX

APPD BY	J. H. KIM	UNIT	mm
CHKD BY	Y. S. KIM	SCALE	1/8
CHKD BY	S. H. KO	PROJEC'N	3rd Angle
DSND BY	I. K. KIM	DATE	2001.10.27

SUBJECT	KS 160M	CAD PROJ \ FILE	XSDNKS\B2000AB05
TITLE	OUTLINE		



REF. NO	B2000AB05	Sheet No.	of
DWG NO	227B2000AB05	Revision No.	0



PT	DESCRIPTION	MATERIAL	DIMENSION	Q'TY
1	CONDUIT BOX	FC15	---	1
2	CONDUIT BOX COVER	FC15	---	1
3	O-RING / COVER	EPDM	φ4	1
4	BOX GASKET	NBR	---	1
5	COVER+BOX HEX BOLT	S45C	M6 X L20	4
6	BOX+FRAME HEX BOLT	S45C	M8 X L20	4
7	GROUND TERMINAL LUG	CU	---	1

REV	DATE	CONTENTS	REV'D BY	CHK'D BY	CHK'D BY	APP'D BY
1						
2						
3						
4						

Q'TY	DESCRIPTION	MATERIAL	DIMENSION	WEIGHT	PART NO.	REMARK	NO.
	APP'D BY KIM.Y.S	UNIT	MM				
	CHK'D BY KO.S.H	SCALE	1:1				
	CHK'D BY Y.J.HWANG	PROJEC'N	3*4 (3rd Angle)				
	DSND BY	DATE	2005.02.16				
	TITLE		TERMINAL BOX ASSEMBLY				
	REF. NO	227B8008LA1		Sheet No.	of		
	DWG NO	227B8008LA1		Revision No.	0		

