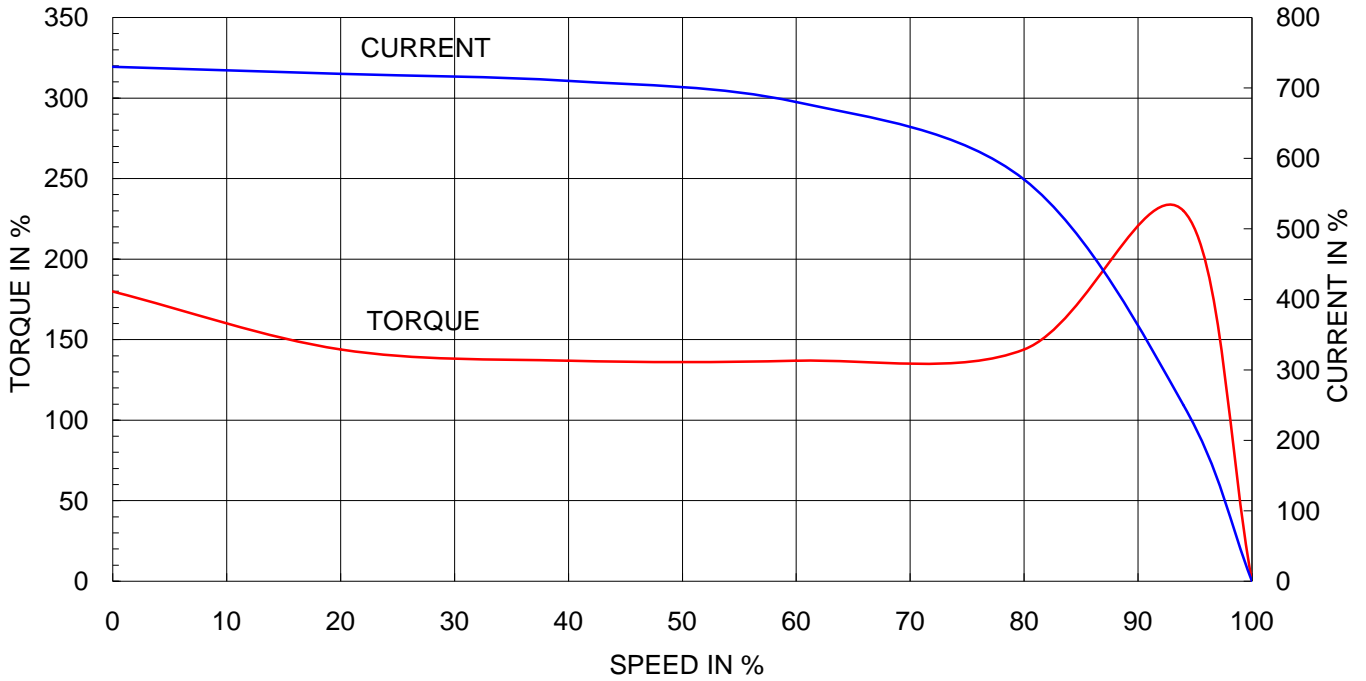


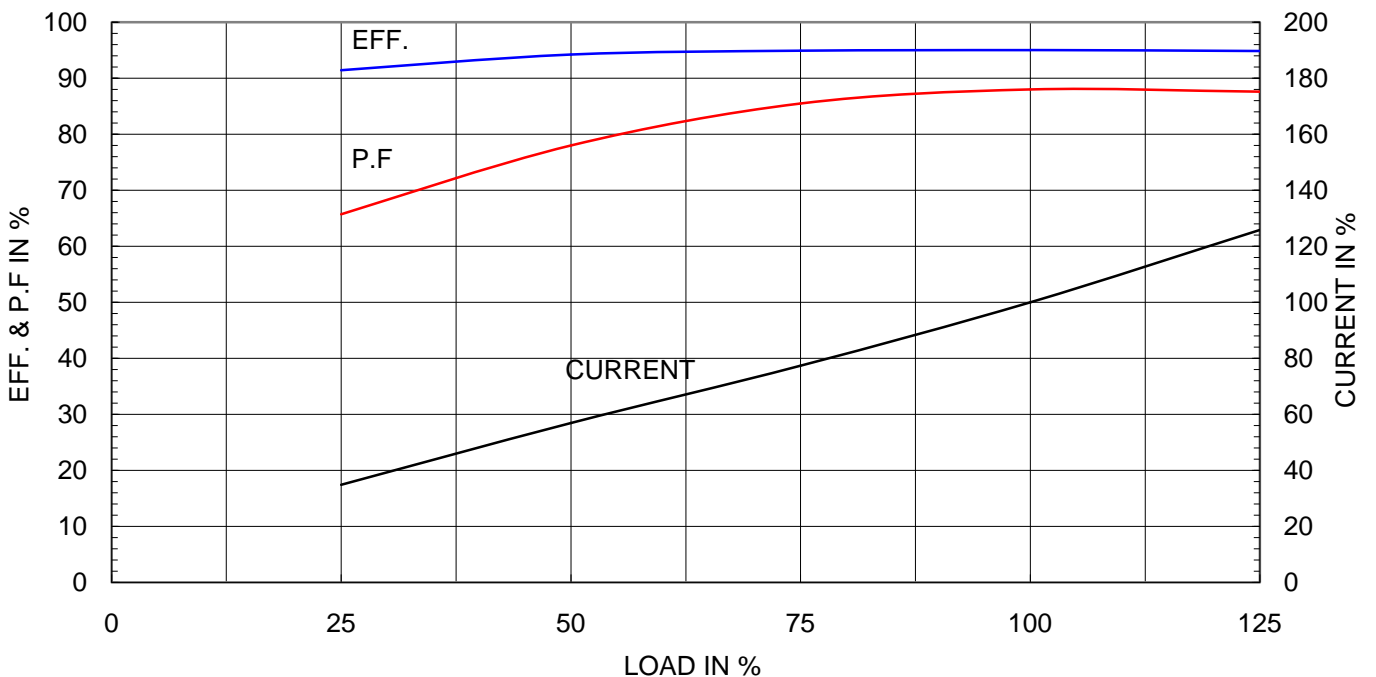
Type	:	HS
Full Load Torque	:	60.0 Kg.m
Motor moment of Inertia (J)	:	3.023 Kg.m ²
Load moment of Inertia (J)	:	78.200 Kg.m ²

110 kW	4 P	60 Hz	
Speed at Full Load :		1785 RPM	
Rated Voltage	440V	380V	220V
Full Load Current	172.7A	199.9A	345.3A

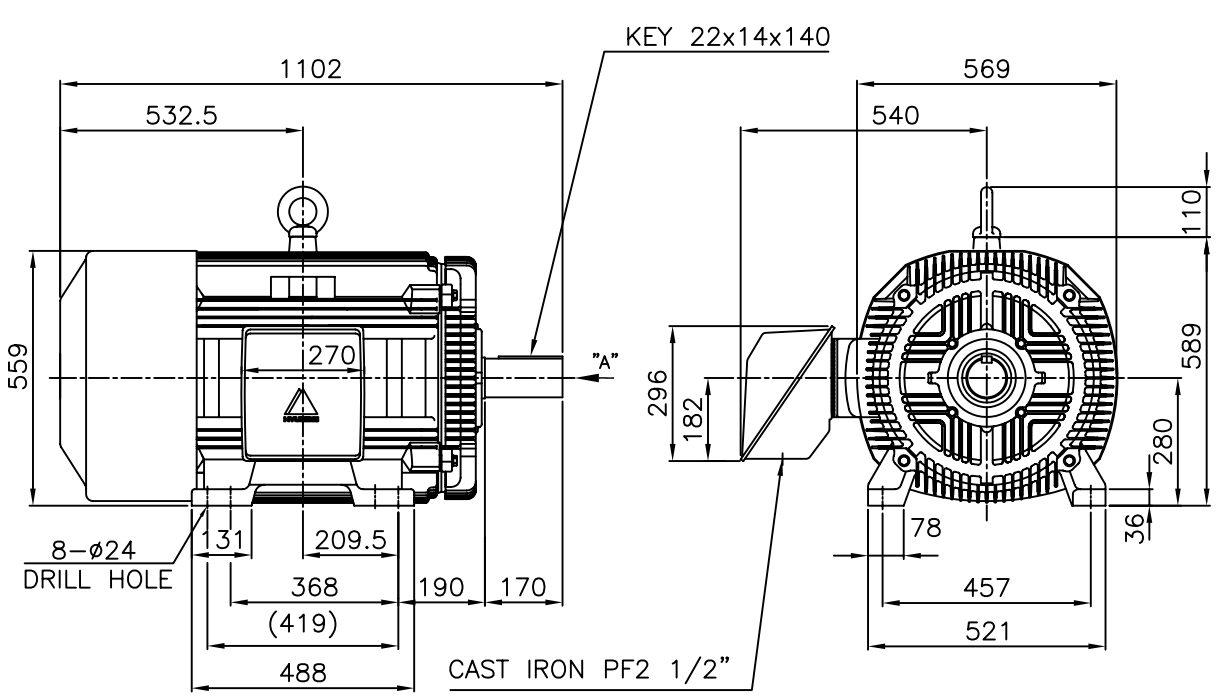
SPEED VS TORQUE & CURRENT CURVE



OUTPUT VS EFF., P.F & CURRENT CURVE



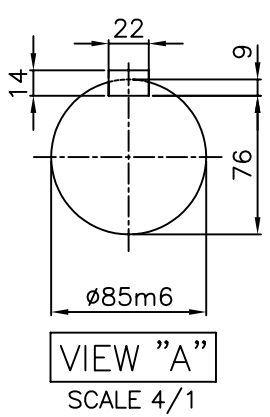
		<h1>TEFC</h1>		TYPE (1) TNB , TDB CAST IRON FRAME
		THREE PHASE INDUCTION MOTOR		



NOTE

1.TOLERANCE :

CENTER HEIGHT	280 ⁰ _{-1.0}
BASE HOLE	ø24 ^{+0.43} ₀
SHAFT DIAMETER	ø85 ^{+0.035} _{+0.013}
KEYWAY WIDTH	22 ^{-0.022} _{-0.074}
KEYWAY DEPTH	9 ^{+0.2} ₀
KEYWAY WIDTH	22 ⁰ _{-0.052}
KEYWAY DEPTH	14 ⁰ _{-0.110}



2.The type (1)-"TNB , TDB" is for HHI's standard products and it can be changed for customer's requirements or detail designing.

				TEFC STANDARD		
APPD BY	KANG K.J.	UNIT	MM	SUBJECT	KS Fr.280S TEFC	
CHKD BY	KIM O.J.	SCALE	1/17			CAD PROJ \ FILE
CHKD BY	LEE N.D.	PROJEC'N	3rd Angle	OUTLINE THREE-PHASE INDUCTION MOTOR		
DSND BY	KIM RYANG GYU	DATE	2007.03.23			
				REF. NO	L2-Series	Sheet No. of
				DWG NO	TJ8SAP51	Revision No. 0

